



SAB KAAM EK DUKAAN

VAKRANGEE KENDRA WITHOUT ATM
Version 02 | 2023

Content

Introduction	03
What is a Vakrangee Kendra Without ATM	04
Customer flow and zoning	05
Drawings	07-43
Placement of Equipment	44
Material palette and specifications	45
Furniture overview	47
Marketing elements and signage	49
Covid - 19 Guidelines	52
Maintenance Guidelines	55

Introduction

One Brand One Design

The design manual has been created to ensure that Kendra's design palette is consistent and expressed effectively across all the Kendra's at PAN India level.

The new design for Vakrangee Kendra Without ATM is a holistic concept which completely reboots the Vakrangee brand experience for customers.

The Version 2 : 2023 Vakrangee Kendra Without ATM Design Manual is MoHFW Compliance for any Pandemic like situation. Health and Safety related regulations are followed in principle and utmost care is taken to safeguard the interest of Franchisee and General Public.

All Specified materials are environment friendly and all service transactions are paperless

The design is refreshing and will appeal to a wide range of markets. A standardized design of Vakrangee Kendra in different regions is produced with a modular approach, and an unified enhancement. The concept strikes a balance between offering design elements and color, along with offering quality, convenience and a high level of service.

The design is an open plan making it extremely comfortable to identify service touch points with ease of movement around the space.

The Kendra environment promotes customers to experience a new way to interact with Vakrangee brand, leading to a smooth and pleasant journey in an inviting and friendly place.

Instructions for franchisee

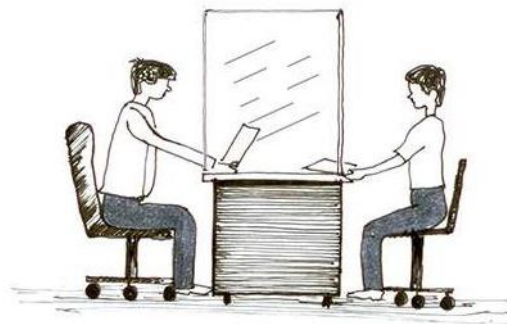
Franchisee must follow the Brand Manual for placement of signage's, marketing, branding and advertisement materials inside and outside the store. Company has the right to change the Artwork/contents as and when required. Franchisee cannot display any additional branding material inside the Kendra unless and until approved by the company. Franchisee has no right to change/alter/delete/add any Artwork and Text matters in the Signage and Branding without written approval from the company. Maintenance of Signage's and Branding is in the scope of the Franchisee and any expenses incurred to maintain or repair any damage/defacing etc. will be in the scope of the Franchisee.

Vakrangee Kendra Without ATM

Vakrangee Kendra offers a broad spectrum of services across different sectors to offer a “One Stop Shop” solution for its customers

Minimum carpet area for a Vakrangee Kendra: 80 sq.ft

Minimum components: One counter



Vakrangee Kendra Operator

- Account Opening, Cash Withdrawal, Cash Deposits and Fund Transfer
- Cash Withdrawal of any Bank and other products of the partner Bank
- FD and RD
- E-Commerce services
- E-Governance services
- Insurance services
- Financial and other services
- Logistics services
- Telemedicine services
- Total Health care services
- DMT & CMS
- Telecom Services
- Bill Payment Services

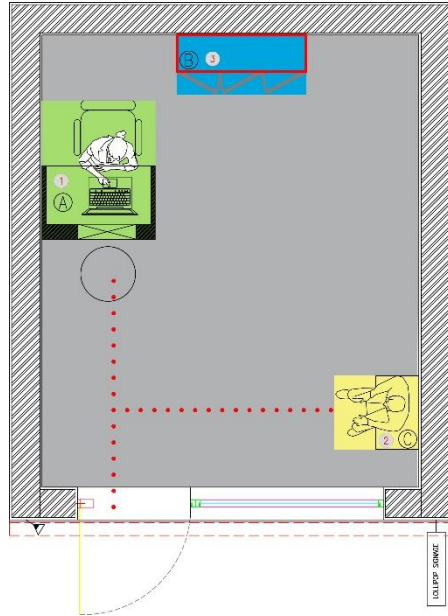


customer flow and zoning

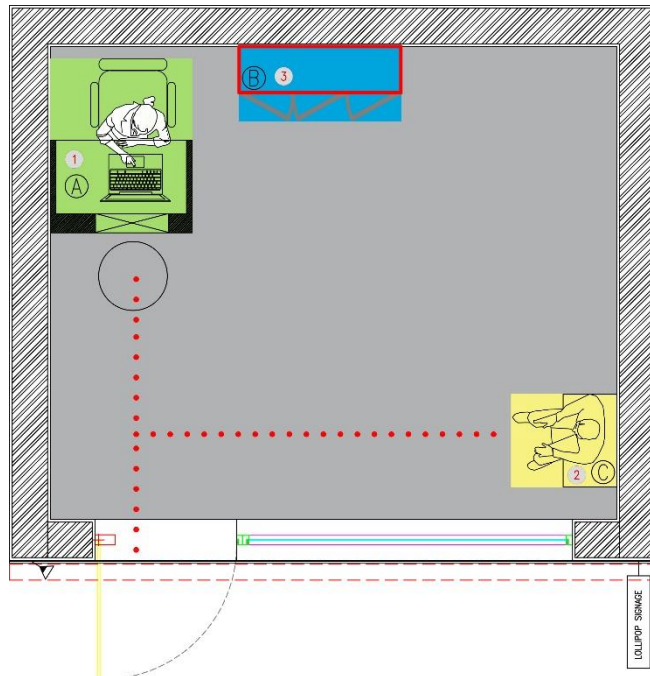
04

Customer flow and zoning

Vertical Layout



Horizontal Layout



With customer at the core, different zones are created to standardise Kendra layouts.

A Kendra is divided into four main zones :

Zone 1 - Sales/counter

Zone 2 - Waiting Area/Customer Area

Zone 3 - Non Sales Area

Zone 1 : Sales zone should cover approximate 25% of total floor space. This includes counter area and back storage area

Zone 2 : Waiting Area/Customer Area should cover 30% of total floor space. This includes waiting bench, water dispenser and circulation area for the customer.

Zone 3 : Non-sales area should cover approximate 15% of total floor space. This only includes storage room area.

... Customer flow 30%

drawings

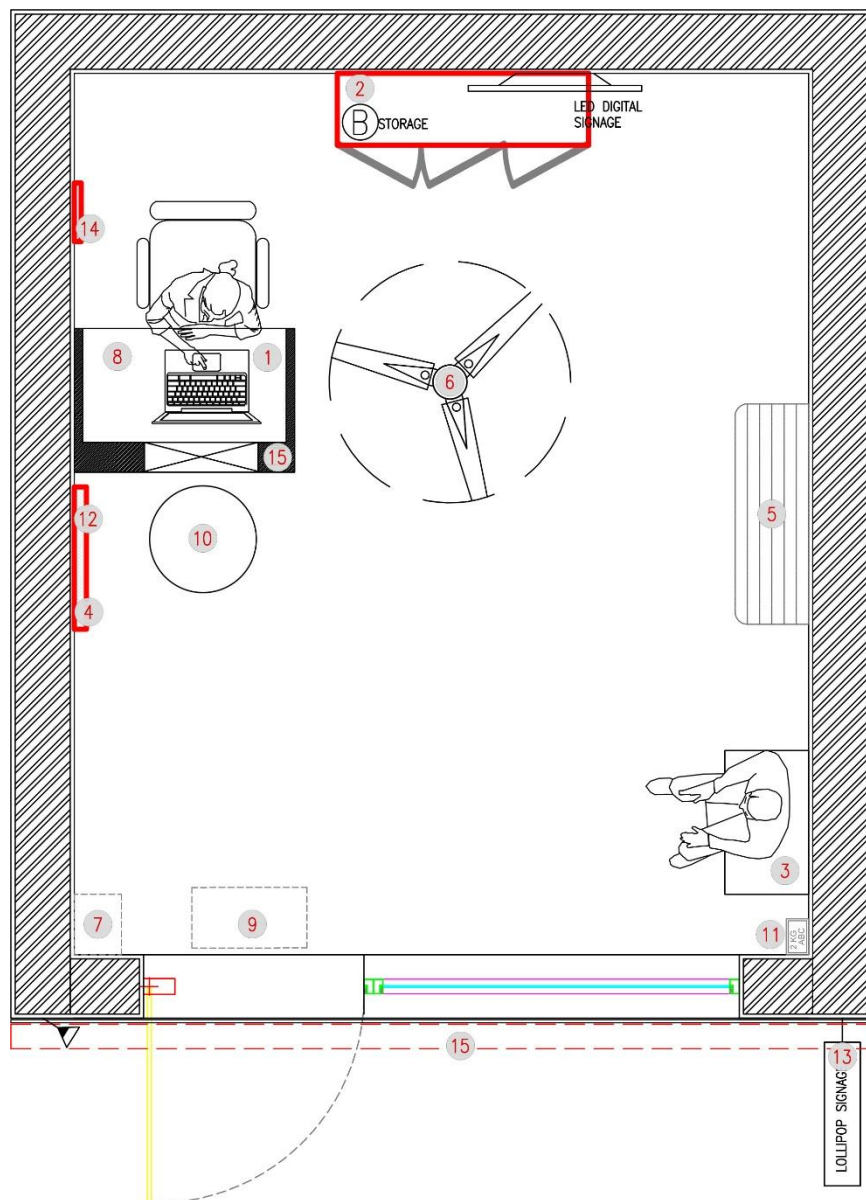
05

Vertical

Format Rectangular

drawings

List of content • General arrangement plan • Kendra views • Civil line-out • Flooring layout • Furniture setting out • Paneling and wall finishes layout • RCP & Elec. power layout • Signage layout • Internal elevations

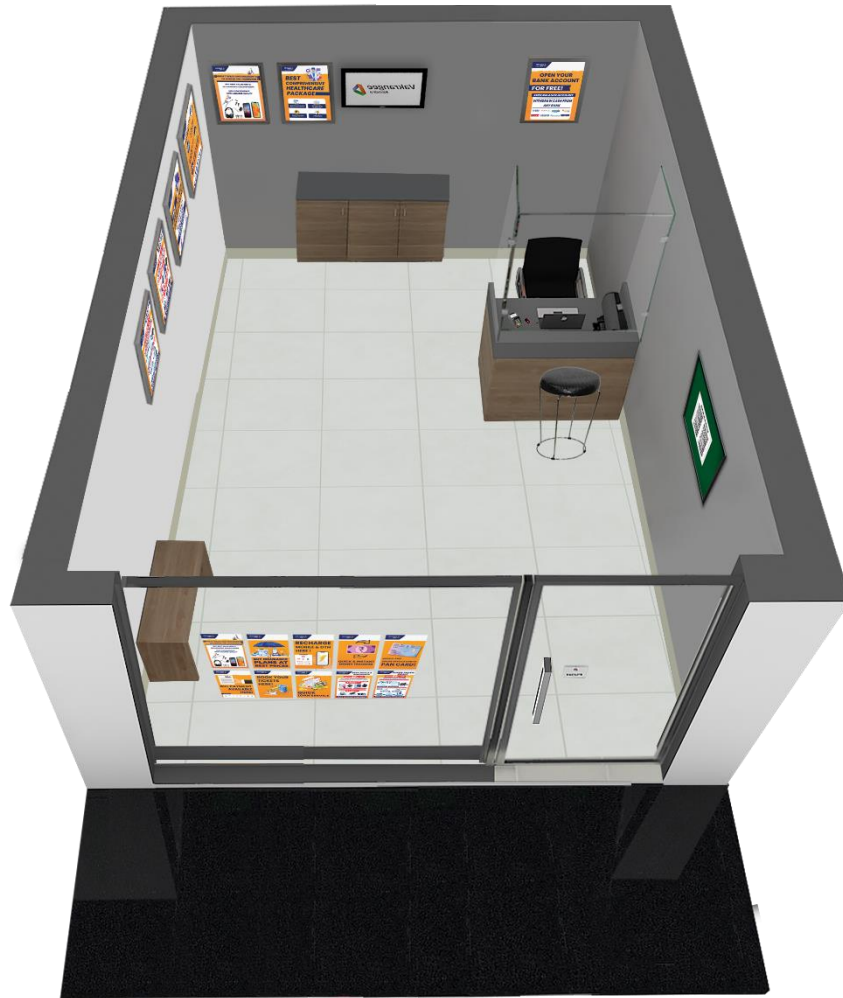


FURNITURE PLACEMENT (TO BE DONE BY FRANCHISEE)

Sr. No.	Items.	Qty.
1	Bank & Other Services Counter	1
2	Storage Cabinet	1
3	Waiting bench	1 (Preferable)
4	Leaflet Holder	1
5	Air Cooler / Air Conditioner	If Required
6	Fan	1
7	Water Dispenser	Preferable
8	Dustbin (Foot operated)	1
9	Doormat	1
10	Chairs / Stool	2
11	Fire Extinguisher	1
12	Soft Board	1
13	Lollipop Signage	1
14	Franchisee Certificate	1
15	Sanitizing station	As per requirement

Note – Placement of Counter Table and Storage cabinet can be placed as per the convenience and availability of space in the Kendra.

Right side entrance door



Left side entrance door



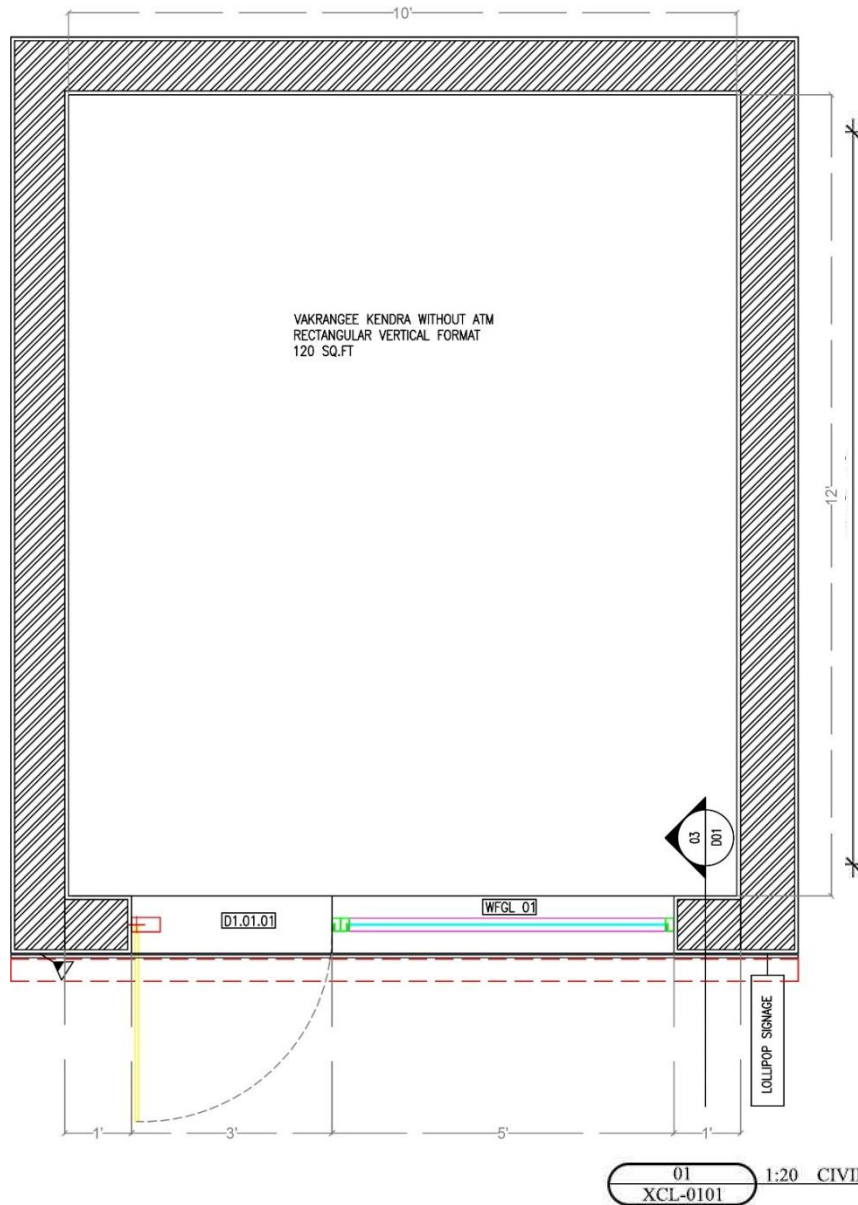
Vakrangee Kendra with PSU Bank



Vakrangee Kendra with Private Bank



Drawings | Rectangular vertical format - Civil lineout 1/2



FIXED GLAZING SPECIFICATIONS

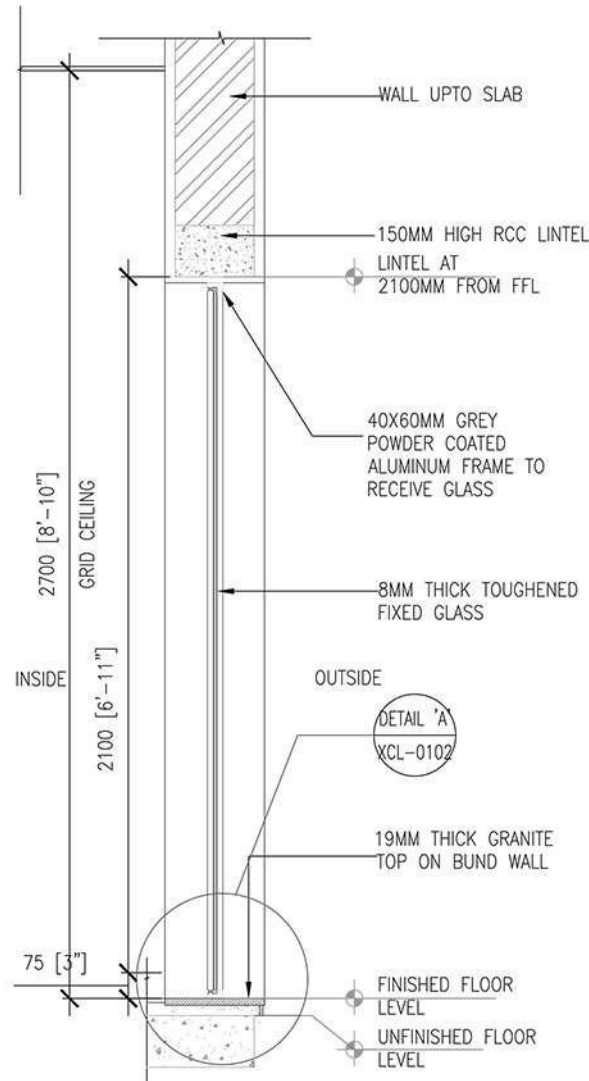
STRUCTURAL OPENING (UNFINISH TO UNFINISH)	SILL FROM FFL (IN MM)	LINTEL FROM FFL (IN MM)	WIDTH (IN MM)	HEIGHT (IN MM)	NOS.
WFGL 01	00	2150	AS PER SITE	AS PER SITE	1

DOOR SPECIFICATIONS

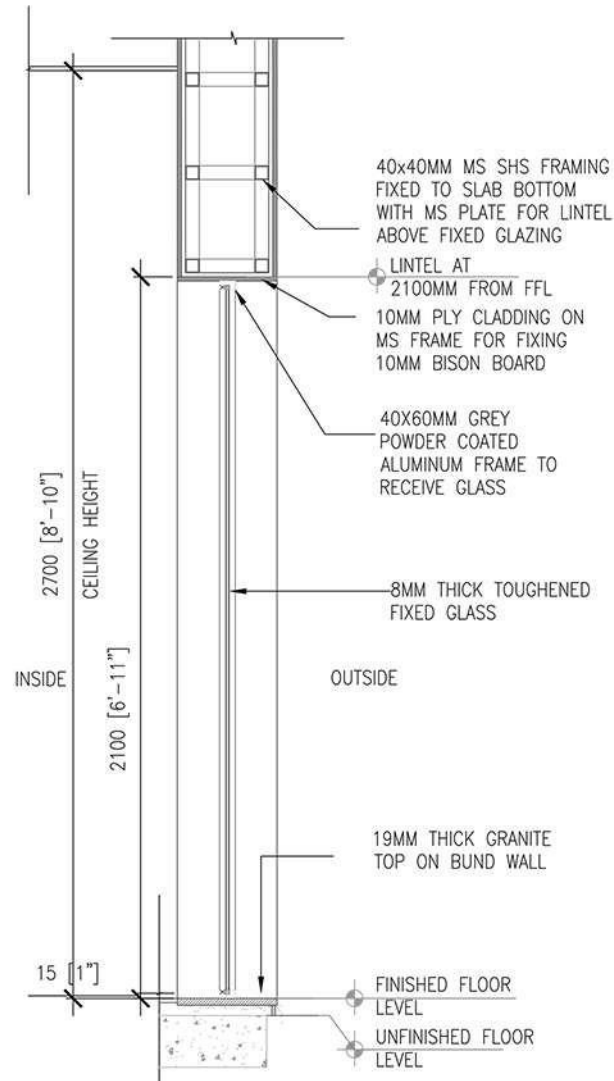
STRUCTURAL OPENING (UNFINISH TO UNFINISH)	WIDTH (IN MM)	HEIGHT (IN MM)
SERVICE AREA		
D1.01.01	900	2150

- DOOR HT. IS GIVEN CONSIDERING 50MM SCREED AND FLOOR TILE.
- ALL DOOR FINISHED HEIGHT TO BE 2100MM

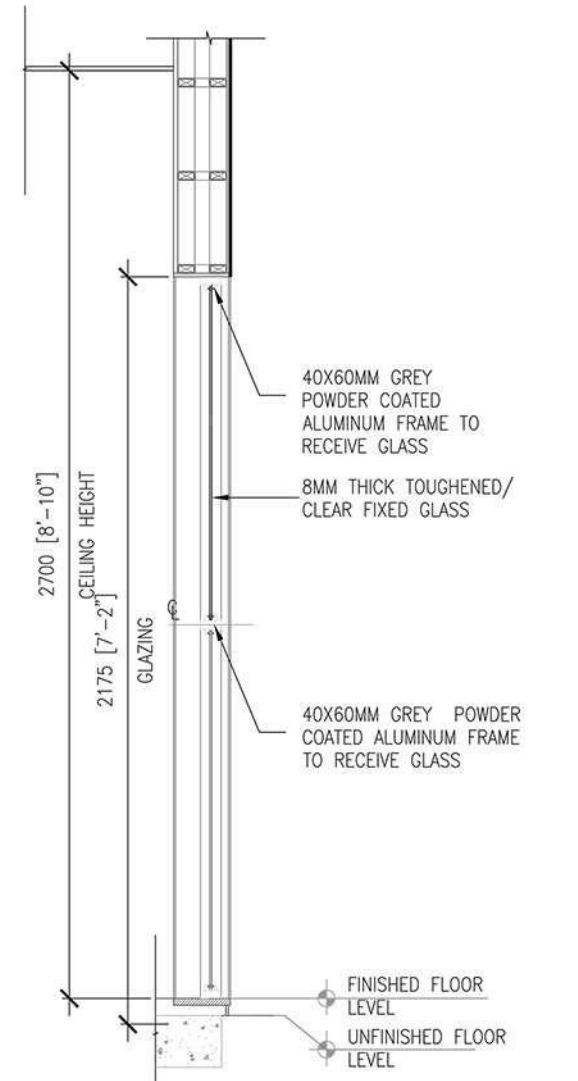
Drawings | Rectangular vertical format - Civil lineout 2/2



02 1:20 FIXED GLAZING SECTION-OPT-01
XCL-0102

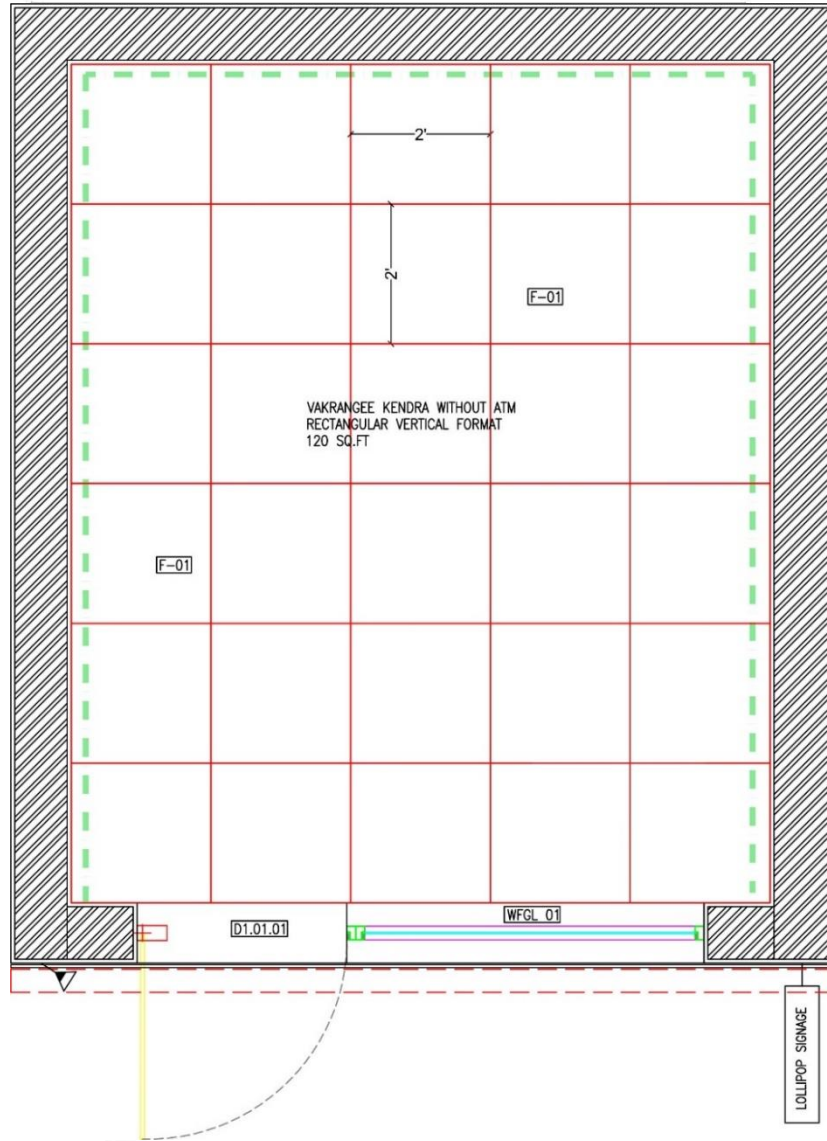


03 1:20 FIXED GLAZING SECTION-OPT-02
XCL-0102



04 1:20 FIXED GLAZING SECTION-OPT-03
XCL-0102

Drawings | Rectangular vertical format - Flooring layout 1/2

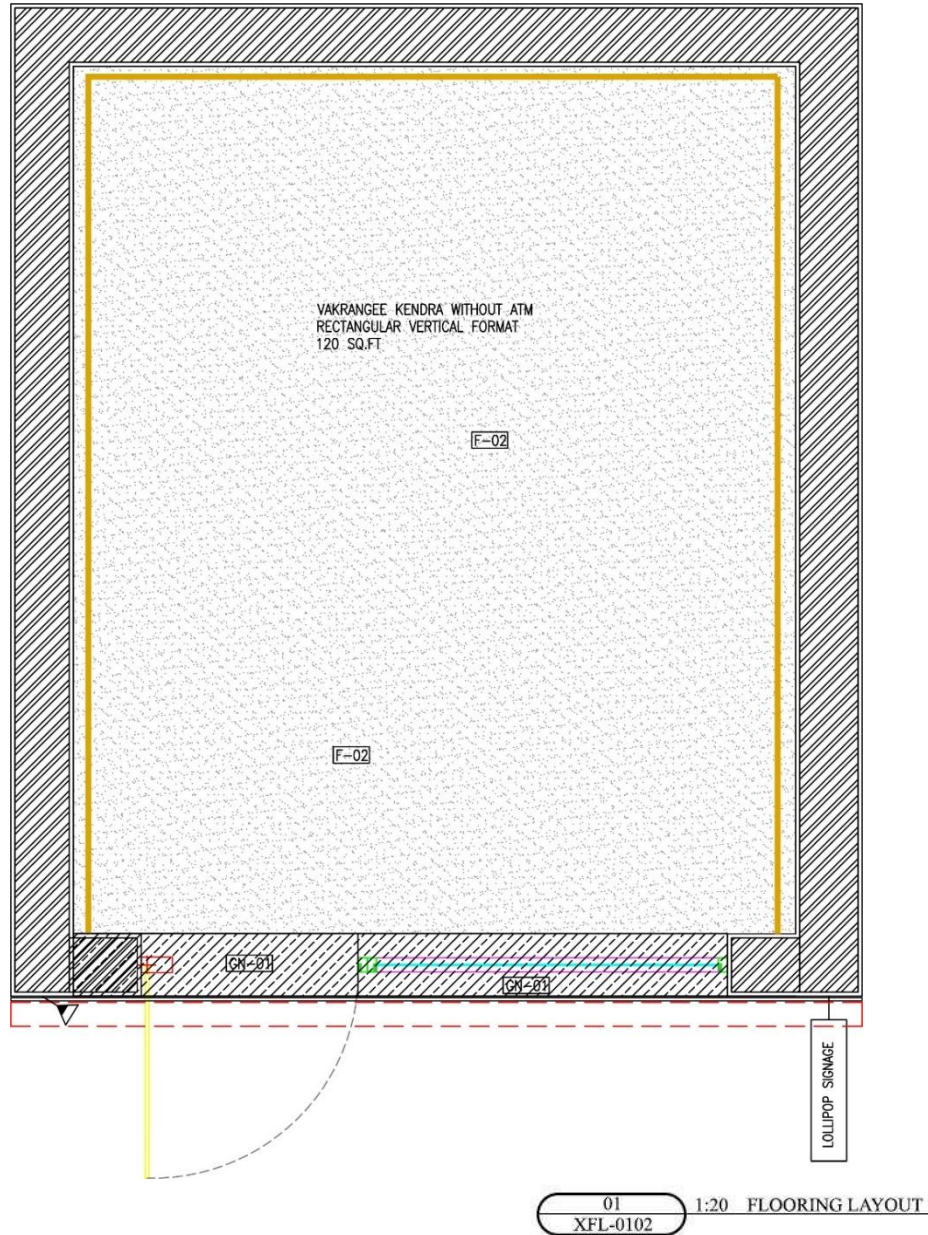


LEGEND		
SYMBOL	SPECIFICATION	MAKE
	F01 ESCARA LIGHT GREY (600X600)	SOMANY CERAMICS
	F02 VINYL FLOORING- ROLL FORM GENTLE GREY (K822-001)	ARMSTORNG
	GN1 GRANITE	
	SK-01 75MM HIGH SKIRTING SAME AS FLOOR TILES (FOR VINYL FLOORING AND TILES FLOORING)	

Note - If the existing Flooring is in good condition then no need to change the Flooring

01
XFL-0101 1:20 FLOORING LAYOUT

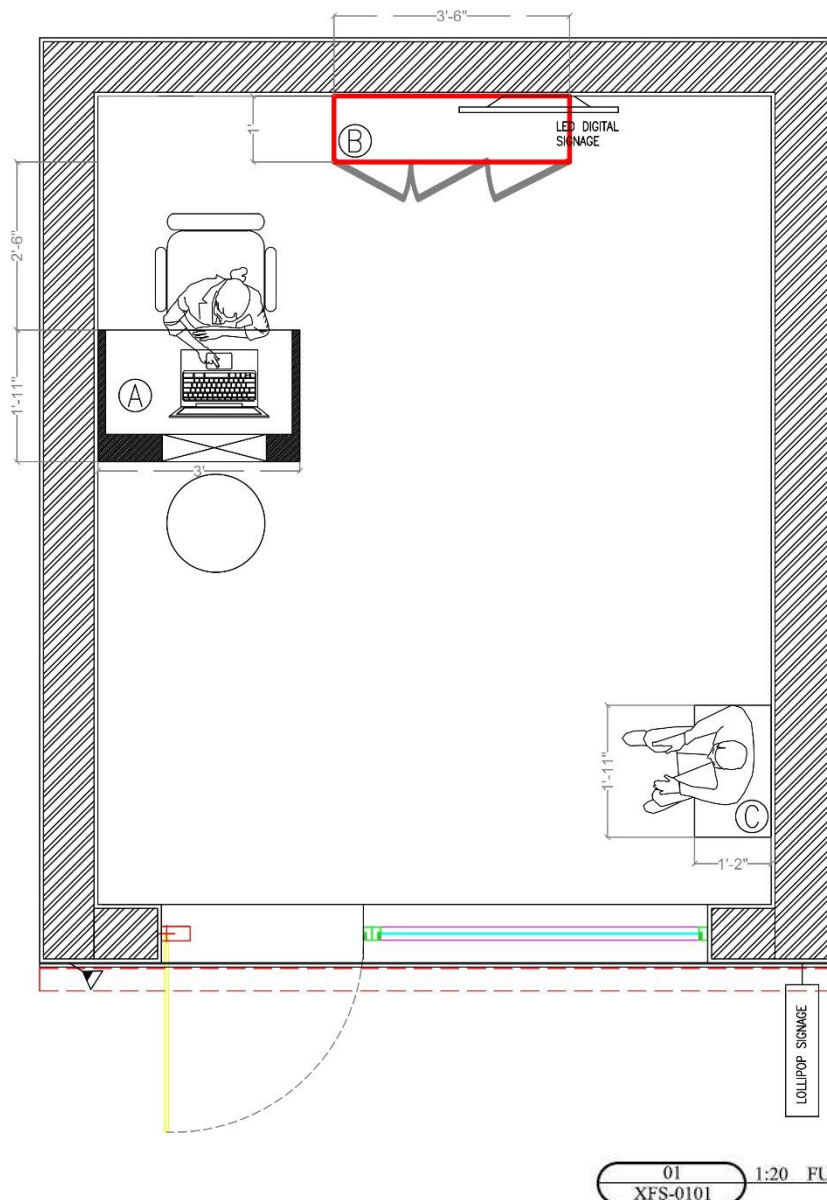
Drawings | Rectangular vertical format - Flooring layout 2/2



LEGEND		
SYMBOL	SPECIFICATION	MAKE
	F01 ESCARA LIGHT GREY (600X600)	SOMANY CERAMICS
	F02 VINYL FLOORING- ROLL FORM GENTLE GREY (K822-001)	ARMSTORNG
	GN1 GRANITE	
	SK-01 75MM HIGH SKIRTING SAME AS FLOOR TILES (FOR VINYL FLOORING AND TILES FLOORING)	

Note - If the existing Flooring is in good condition then no need to change the Flooring

Drawings | Rectangular vertical format - Furniture setting out

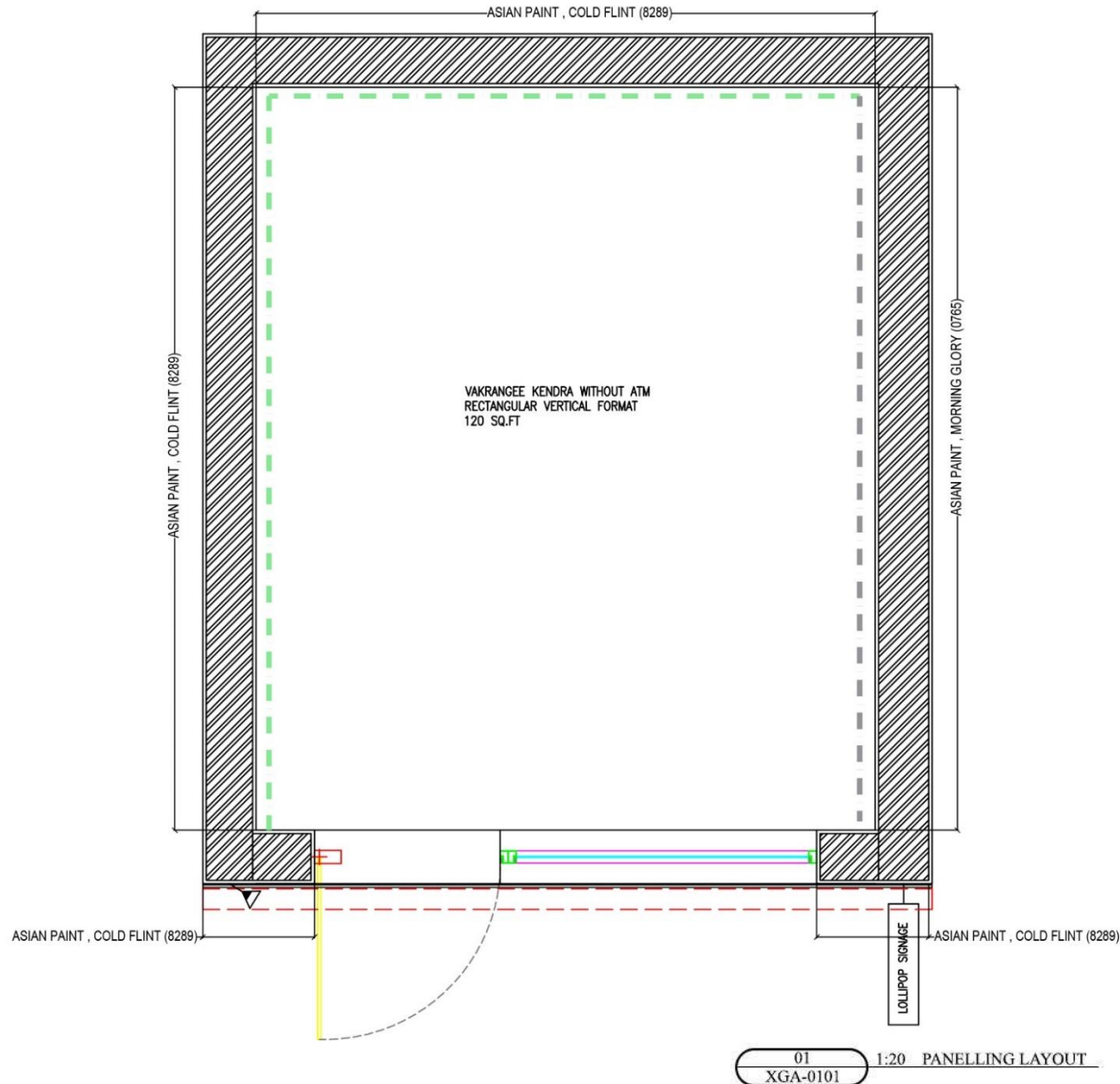


SR.NO.	CODE	DESCRIPTION	DIMENSION	FIXING	NOTES
1	(A)	MODULAR WORKSTATION	1050(L)X600(W)X 925(H)MM	LOOSE	WORKSTATION FINISH IN APPROVED LAMINATE GREENLAM, NORDIC WALNUT (5333) AND SMOG (269).
2	(B)	STORAGE CABINET	1050(L)X300(W)X 750(H)MM	LOOSE	MODULAR STORAGE CABINET FINISHED IN GREENLAM, NORDIC WALNUT (5333) & SMOG (269)
3	(C)	WAITING BENCH	600(L)X350(W)X 450(H)MM	LOOSE	MODULAR WAITING BENCH FINISHED IN GREENLAM NORDIC WALNUT (5333)

Note - for existing franchisee only - If the existing counter table is in good condition and suitable to keep the necessary equipments with drawers facility then no need to change the counter table.

NOTE : PROVISION OF WAITING BENCH IS PREFERABLE.

Drawings | Rectangular vertical format - Paneling and wall finishes layout

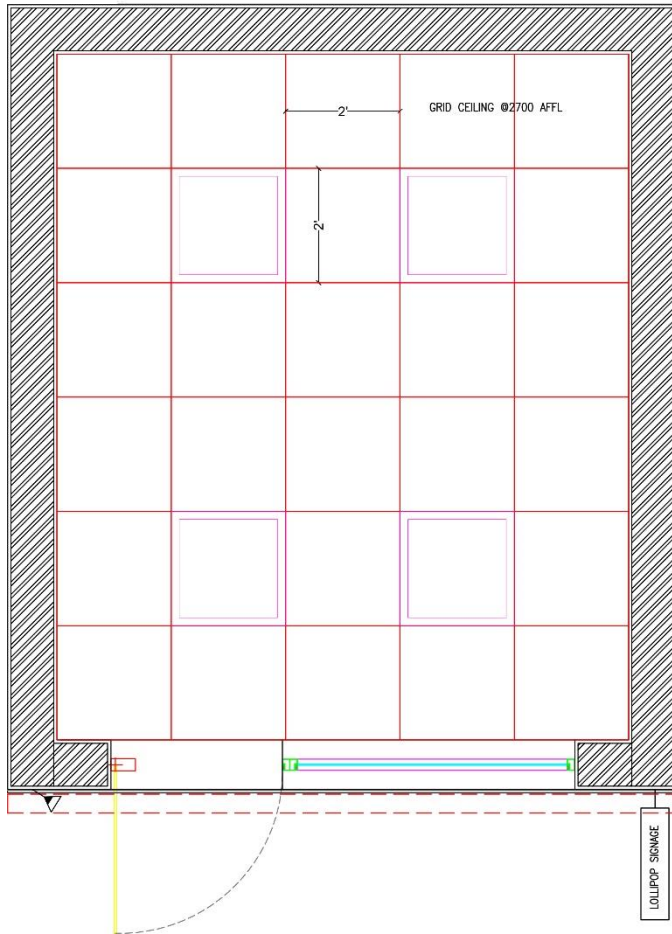


LEGEND OF FINISHES			
SR.NO	FINISHES CODE	DESCRIPTION	
PAINT			
1	PT-01 — — — — —	ASIAN PAINT, MORNING GLORY (0765).	
2	PT-02 — — — — —	ASIAN PAINT, COLD FLINT (8289).	

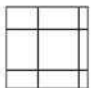
NOTE :

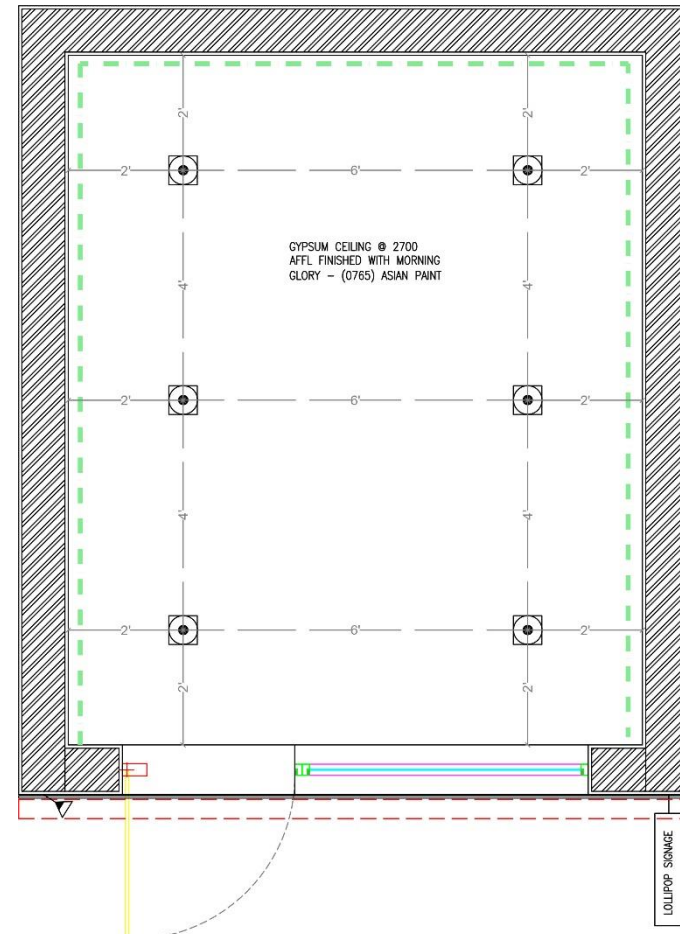
- ROLLING SHUTTER TO BE FINISHED WITH SYNTHETIC ENAMEL PAINT TO MATCH WITH —ASIAN PAINT, MORNING GLORY (0765)

Drawings | Rectangular vertical format - RCP & Elec. power layout 1/2






01 NTS: REFLECTED CEILING PLAN
XRC-0101 OPTION 1 WITH GRID CEILING

CEILING FINISHES LEGEND	
REF.	FINISHES
	CH2700 AFFL GRID CEILING WITH 600 X 600MM TILES TEGULAR EDGE REGULAR COLOUR:WHITE ARMSTRONG- FINE FISSURED

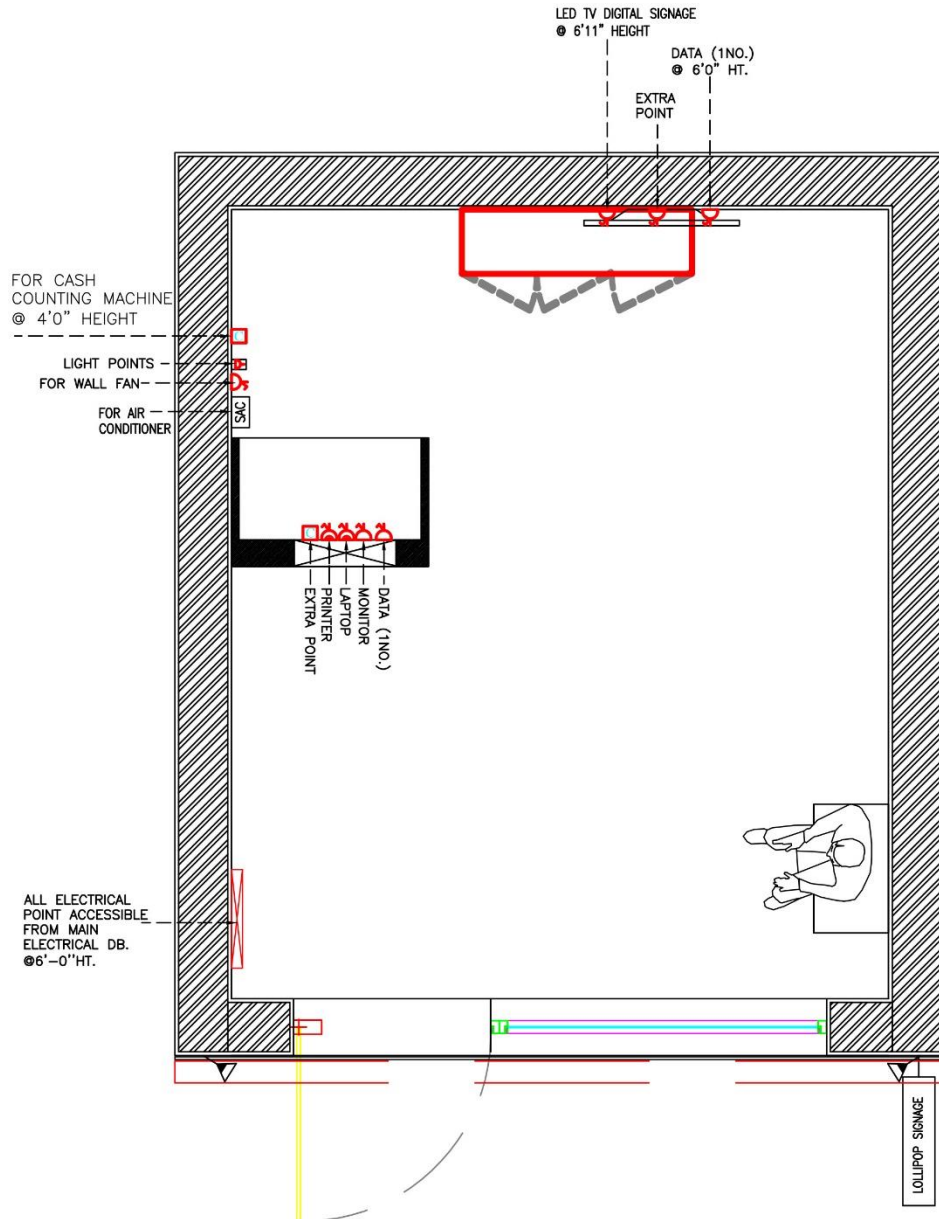


01 NTS: REFLECTED CEILING PLAN
XRC-0101 OPTION 2 WITH GYPSUM CEILING

LIGHT FIXTURE LEGEND	
	AELP36W, 36W, 6000K WITH LED EDISO LED & PHILIPS DRIVER
	150 W LED -BRIGHT WHITE -FOCUS LIGHT ABOVE EXTERNAL- MAIN SIGNAGE
	18 W RECESSED LED LIGHT 150X150

Note - for existing franchisee only - If the existing ceiling and lighting is in good condition then no need of changing ceiling and lights

Drawings | Rectangular vertical format - RCP & Elec. power layout 2/2



ELECTRICAL LEGEND:

	2/3 PIN 6A SWITCH SOCKET ON RAW POWER
	3/3 PIN 16A SWITCH SOCKET ON RAW POWER
	2/3 PIN 16A SWITCH SOCKET EXTERNAL SIGNAGE
	DATA OUTLET (CAT 6)
	WALL FAN ● 2100mm/7' FFL IF REQUIRED
	CEILING FAN ● 2700mm FFL/HIGH SPEED/WHITE COLOR
	32A AC SWITCH ● 2100mm/7' FROM FFL AND AC AT 2400mm/8' FROM FFL
	AC UNIT AT 2400mm/8' FROM FFL
	SWITCH ● 1200mm/4' FROM FFL—ANCHOR ROMA CLASSIC/ ANCHOR PENTA MODULAR WHITE PLATES
	2 kg ABC FIRE EXTINGUISHER AT 900mm FFL
	CCTV CAMERA ● CEILING HT LVL

NOTES:

LIGHT FITTING — LED LIGHT

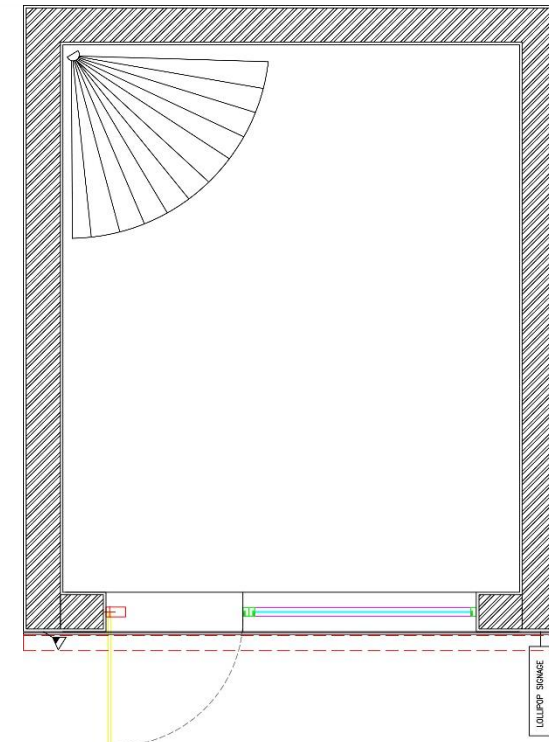
WORKSTATION — ALL POINTS BELOW TABLE TOP

STORAGE CABINET — ALL ELECTRICAL POINTS TO BE AT 900MM

GENSET/INVERTER TO BE PLACED AS PER SITE CONDITION.

IN CASE IF THERE IS NO STORAGE WITHIN THE SITE, DB AND INVERTER TO BE KEPT NEAR THE MAIN ENTRY. VOLTAGE PARAMETERS REQUIRED FOR NORMAL OPERATING OF ATM MACHINE

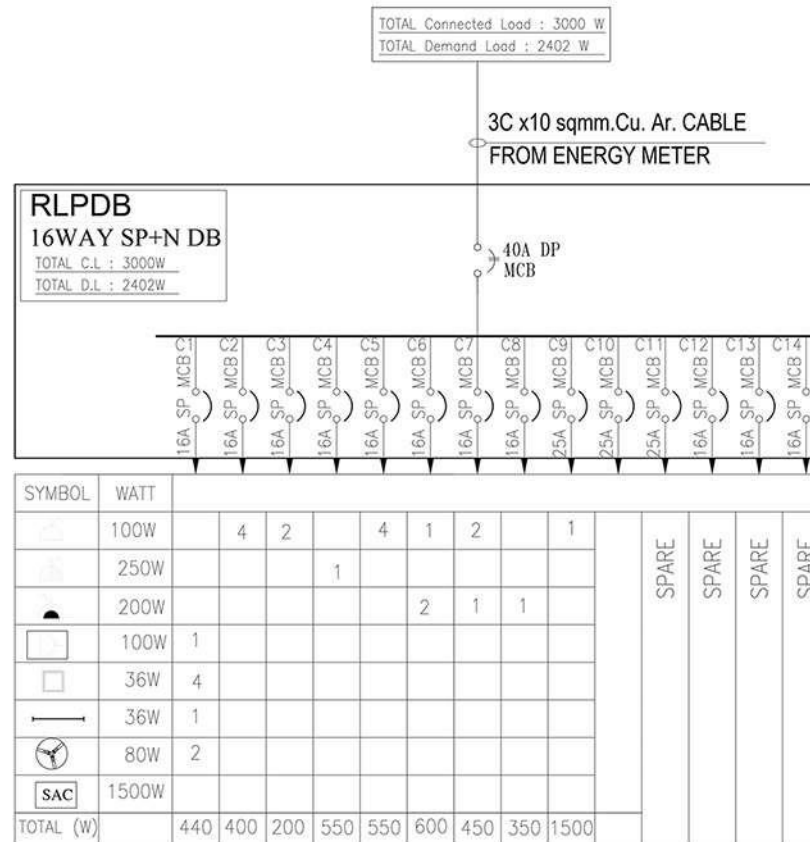
AC VOLTAGE — 198V TO 257V WITH 50Hz FREQUENCY



NTS: POWER LAYOUT

NOTE : • PLEASE KEEP EXTRA CABLE LENGTH OF 2MTR AT THE CCTV CAMERA LOCATION FOR SMOOTH INSTALLATION.
• THE CASH COUNTING MACHINE SHOULD BE VISIBLE IN CAMERA

Drawings | Rectangular Vertical format - Electrical SLD

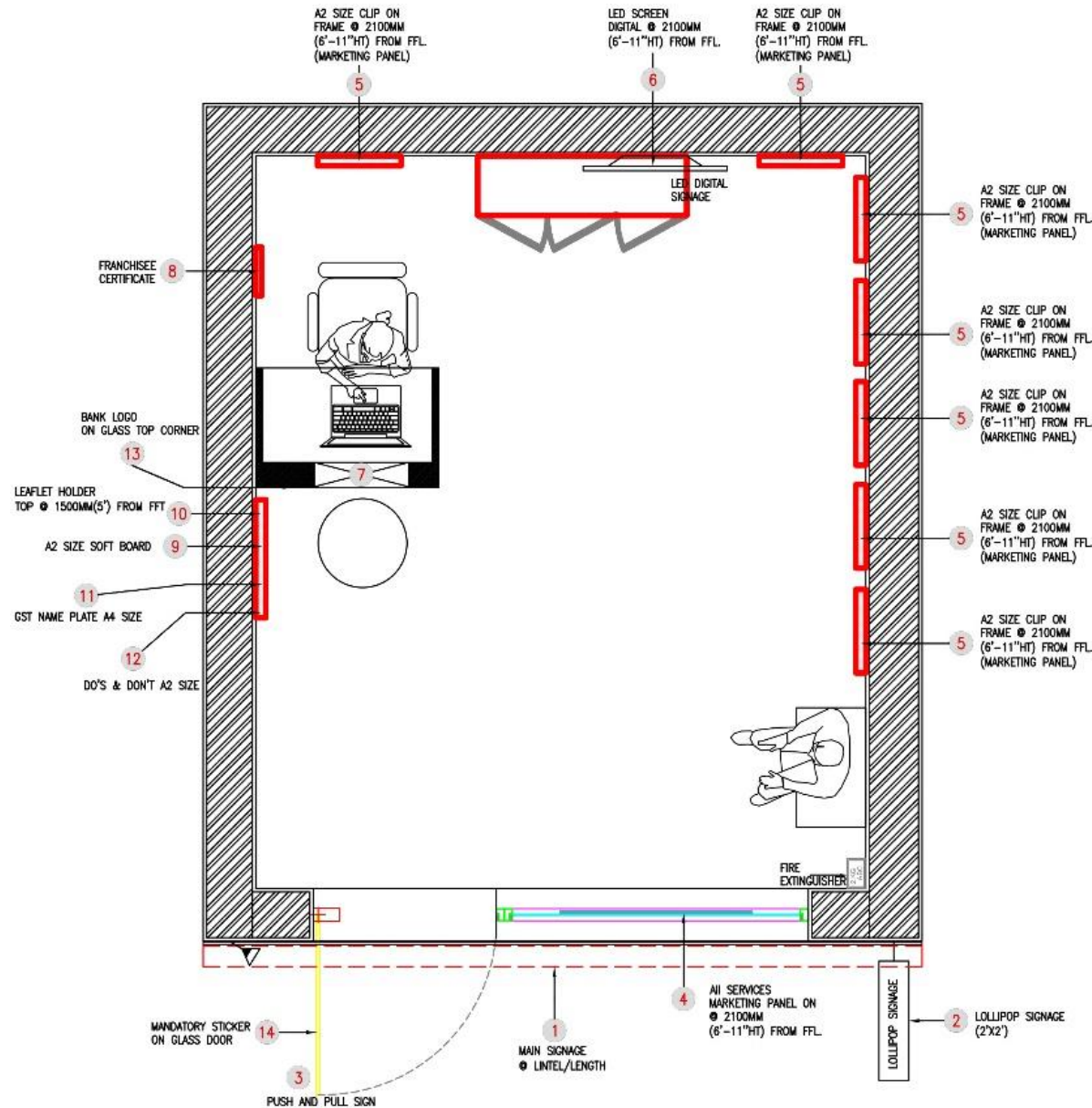


NOTES:

- APPROXIMATE REQUIRED LOAD FOR BRONZE WITHOUT ATM FORMAT -1600 W
- FINAL LOAD TO BE CALCULATED AS PER ACTUAL SITE REQUIREMENTS.
- INVERTER OR GEN-SET LOAD TO BE CALCULATED AS PER SITE REQUIREMENTS.
- FOR ALL POWER POINTS: 3CX2.5 SQMM FRLS FLEXIBLE COPPER CONDUCTOR CABLES.
- FOR SPLIT UNIT : 3CX4 SQMM FRLS FLEXIBLE COPPER CONDUCTOR CABLES.
- FOR ALL LIGHT & FAN CONNECTION: 3CX1.5 SQMM FRLS FLEXIBLE COPPER CONDUCTOR CABLES.
- FOR DATA AND TELEPHONE: 4 PAIR CAT 6 UTP WIRE.

Drawings | Rectangular vertical format - Signage layout

* PLEASE REFER PAGE NO – 50 FOR DETAILS



Note - Clip on Frame is optional. A2 posters can be installed in normal photo frame or it can be pasted directly on smooth wall.

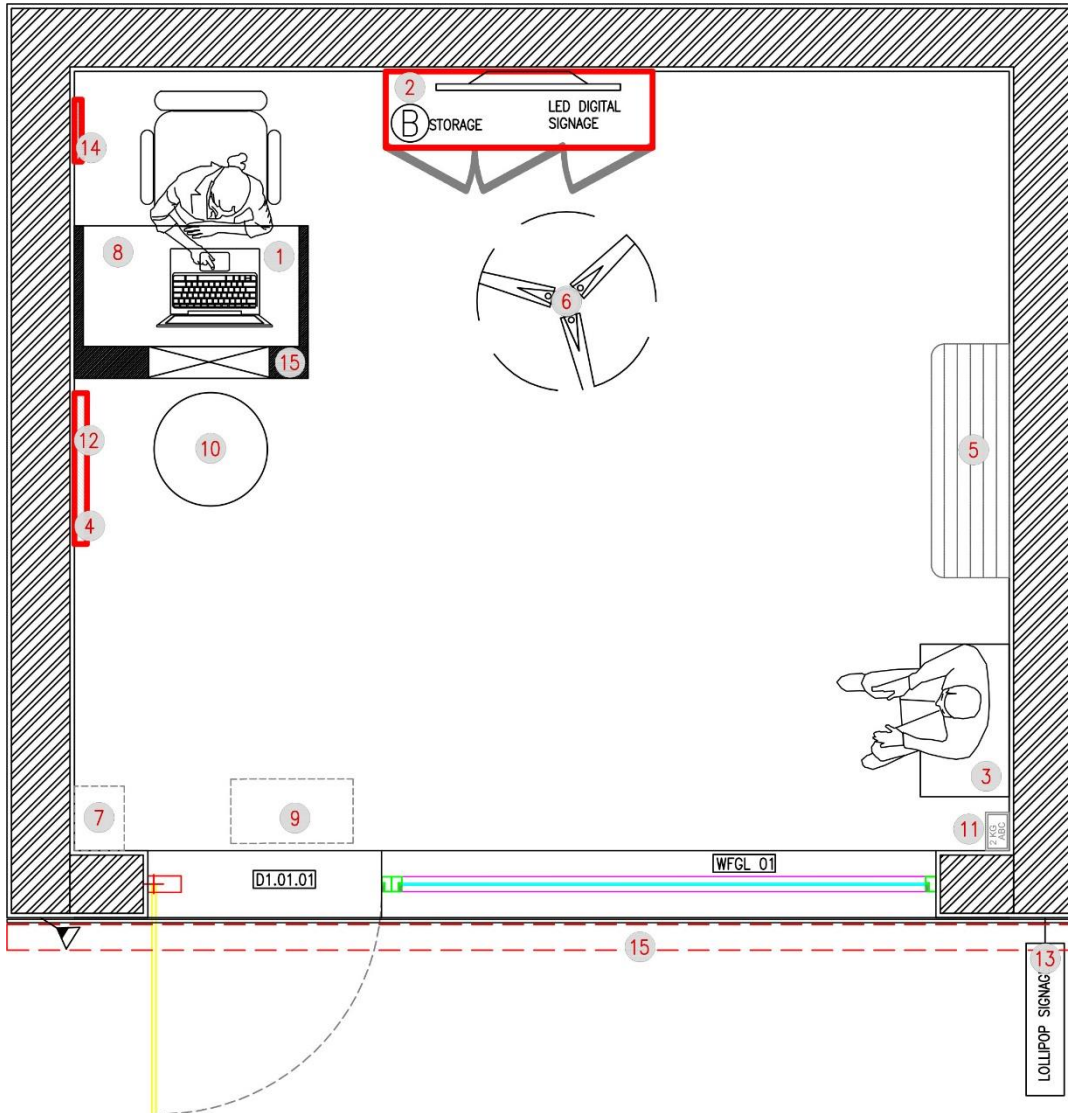
Format Rectangular Horizontal

drawings

List of content • General arrangement plan • Kendra views • Civil line-out • Flooring layout • Furniture setting out • Paneling and wall finishes layout • RCP & Elec. power layout • Signage layout • Internal elevations

05.1

Drawings | Rectangular horizontal format - General arrangement plan



FURNITURE PLACEMENT (TO BE DONE BY FRANCHISEE)

Sr. No.	Items.	Qty.
1	Bank & Other Services Counter	1
2	Storage Cabinet	1
3	Waiting bench	1 (Preferable)
4	Leaflet Holder	1
5	Air Cooler / Air Conditioner	If Required
6	Fan	1
7	Water Dispenser	Preferable
8	Dustbin (Foot operated)	1
9	Doormat	1
10	Chairs / Stool	2
11	Fire Extinguisher	1
12	Soft Board	1
13	Lollipop Signage	1
14	Franchisee Certificate	1
15	Sanitizing station	As per requirement

Note – Placement of Counter Table and Storage cabinet can be placed as per the convenience and availability of space in the Kendra.

01
XGA-0101 01 GENERAL ARRANGEMENT PLAN

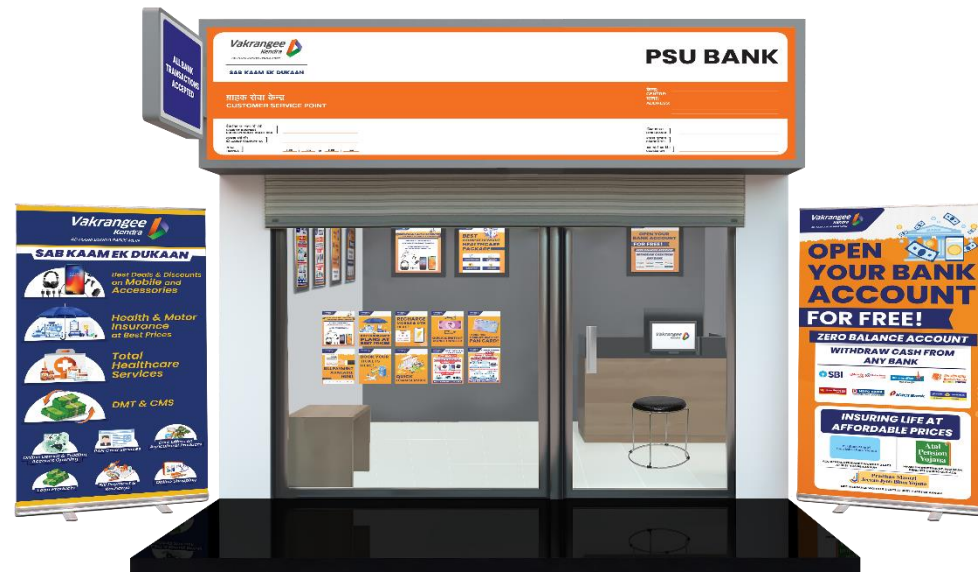
Right side entrance door



Left side entrance door



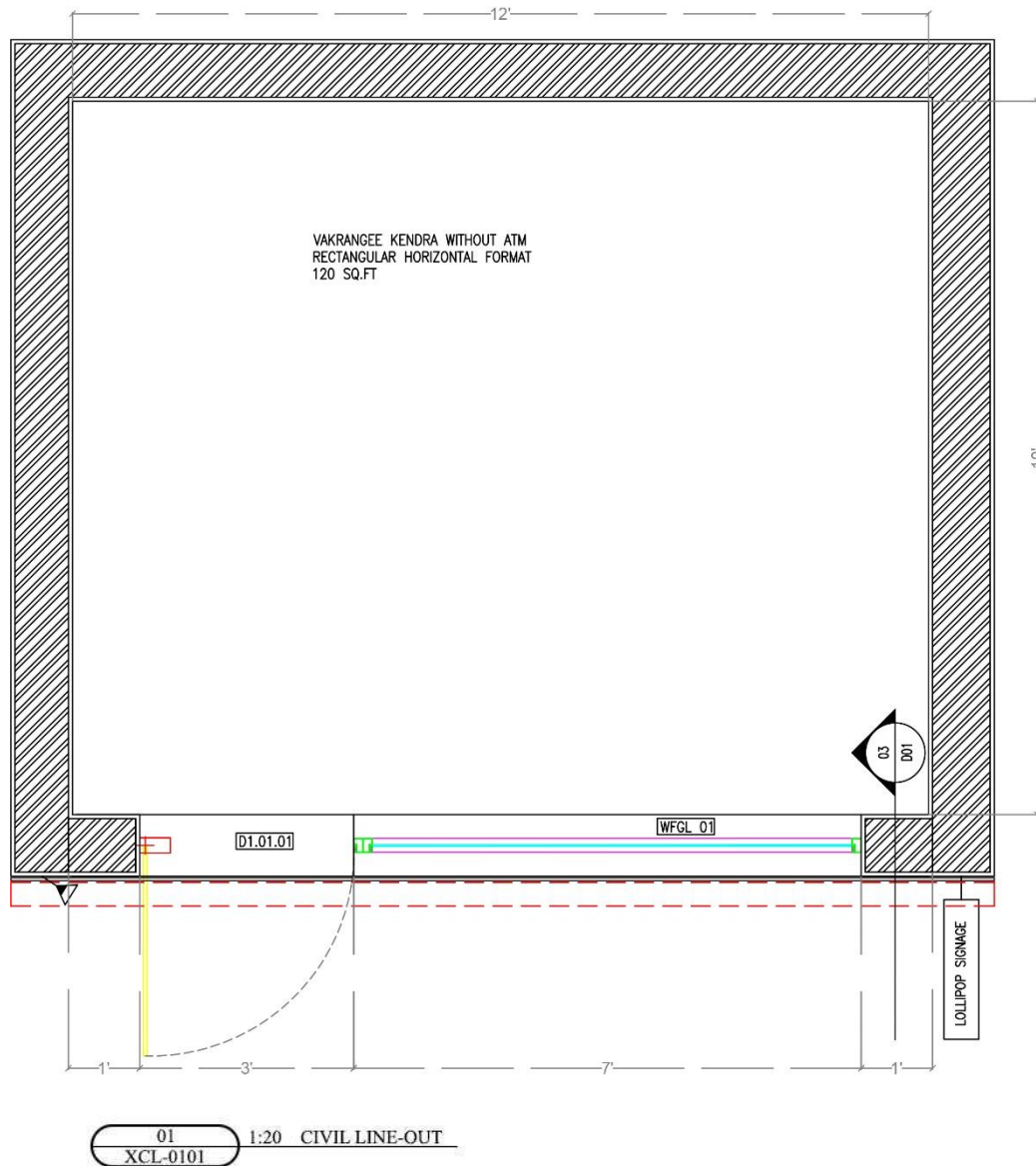
Vakrangee Kendra with PSU Bank



Vakrangee Kendra with Private Bank



Drawings | Rectangular horizontal format - Civil lineout 1/2



FIXED GLAZING SPECIFICATIONS

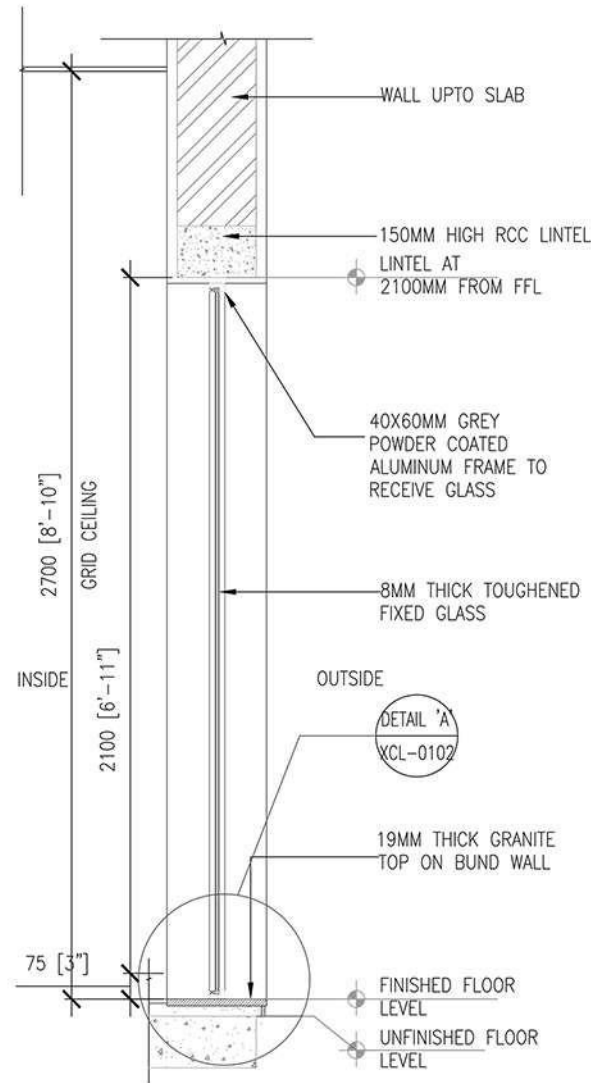
STRUCTURAL OPENING (UNFINISH TO UNFINISH)	SILL FROM FFL (IN MM)	LINTEL FROM FFL (IN MM)	WIDTH (IN MM)	HEIGHT (IN MM)	NOS.
WFGL 01	00	2150	AS PER SITE	AS PER SITE	1

DOOR SPECIFICATIONS

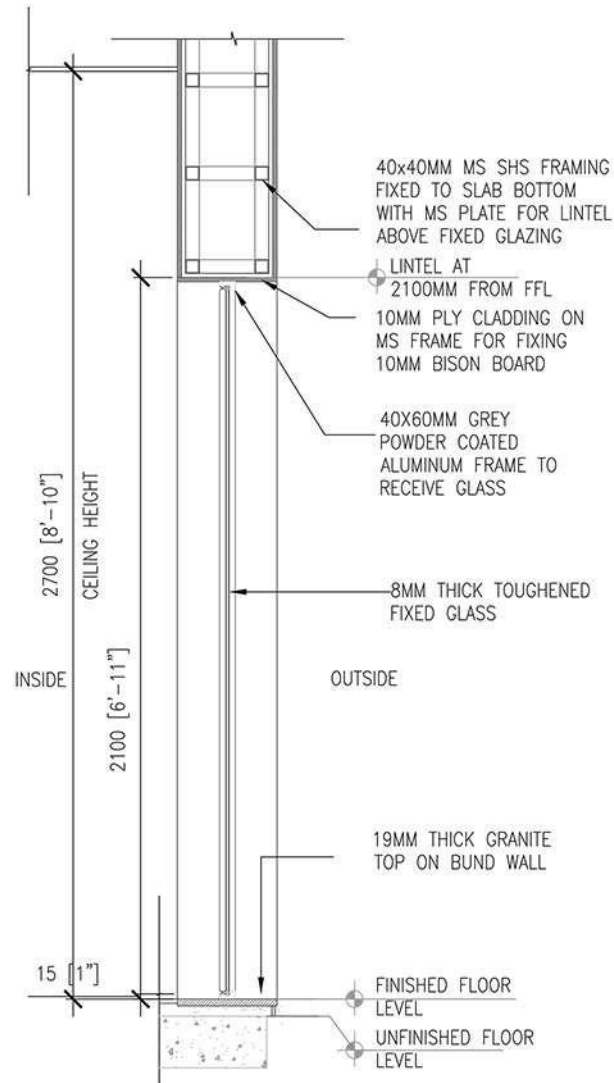
STRUCTURAL OPENING (UNFINISH TO UNFINISH)	WIDTH (IN MM)	HEIGHT (IN MM)
SERVICE AREA		
D1.01.01	900	2150

- DOOR HT. IS GIVEN CONSIDERING 50MM SCREED AND FLOOR TILE.
- ALL DOOR FINISHED HEIGHT TO BE 2100MM

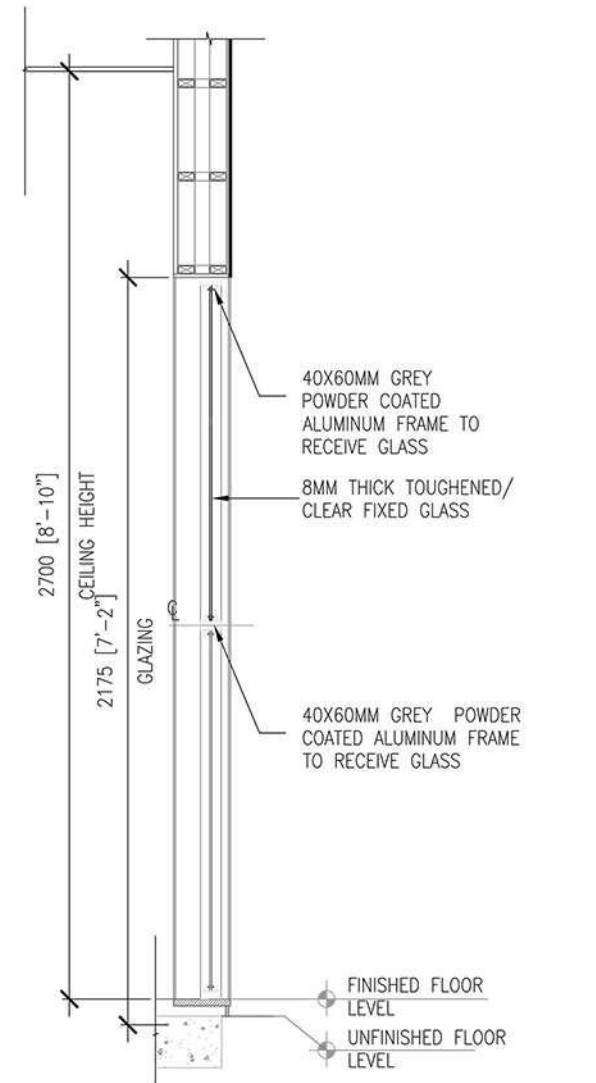
Drawings | Rectangular horizontal format - Civil lineout 2/2



02 1:20 FIXED GLAZING SECTION-OPT-01
XCL-0102

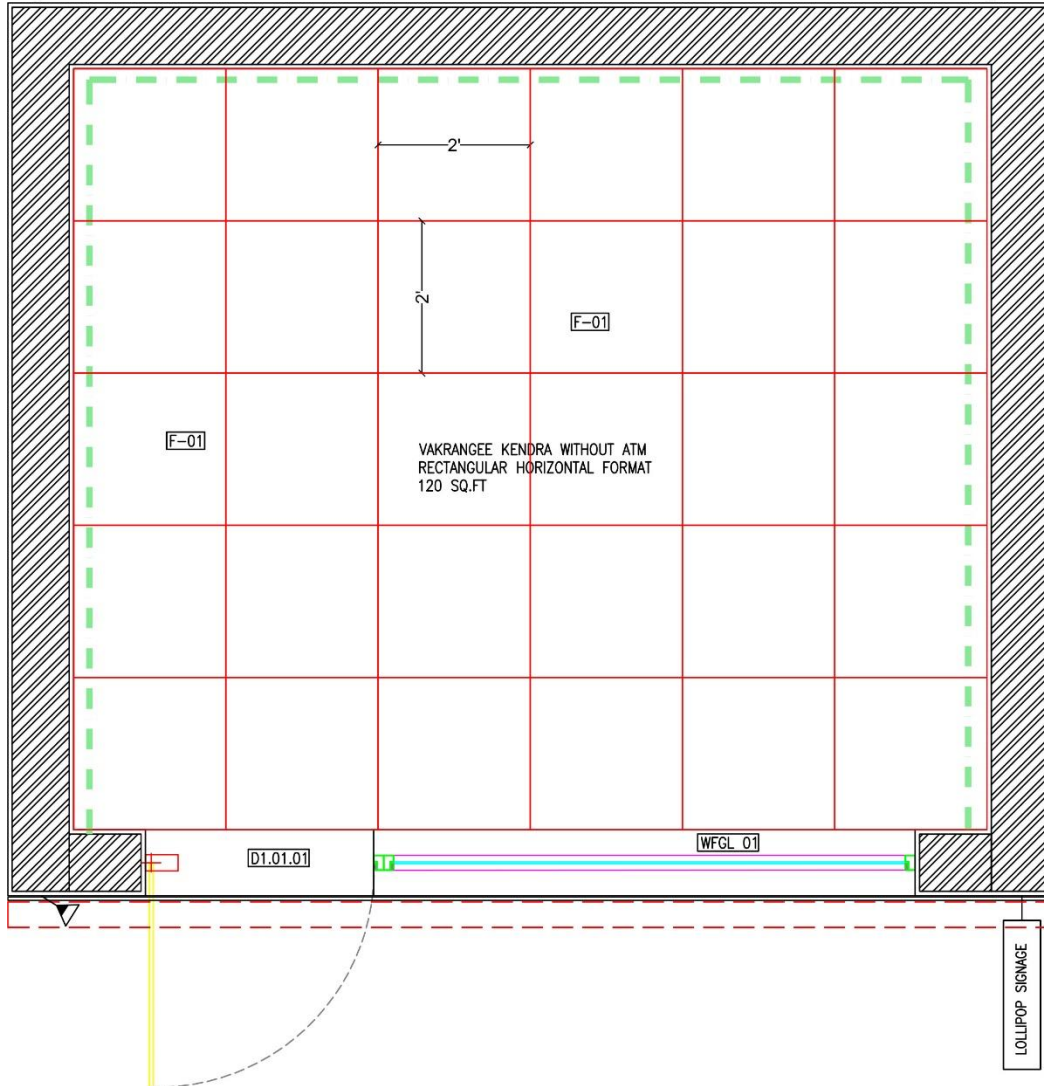


03 1:20 FIXED GLAZING SECTION-OPT-02
XCL-0102



04 1:20 FIXED GLAZING SECTION-OPT-03
XCL-0102

Drawings | Rectangular horizontal format - Flooring layout 1/2

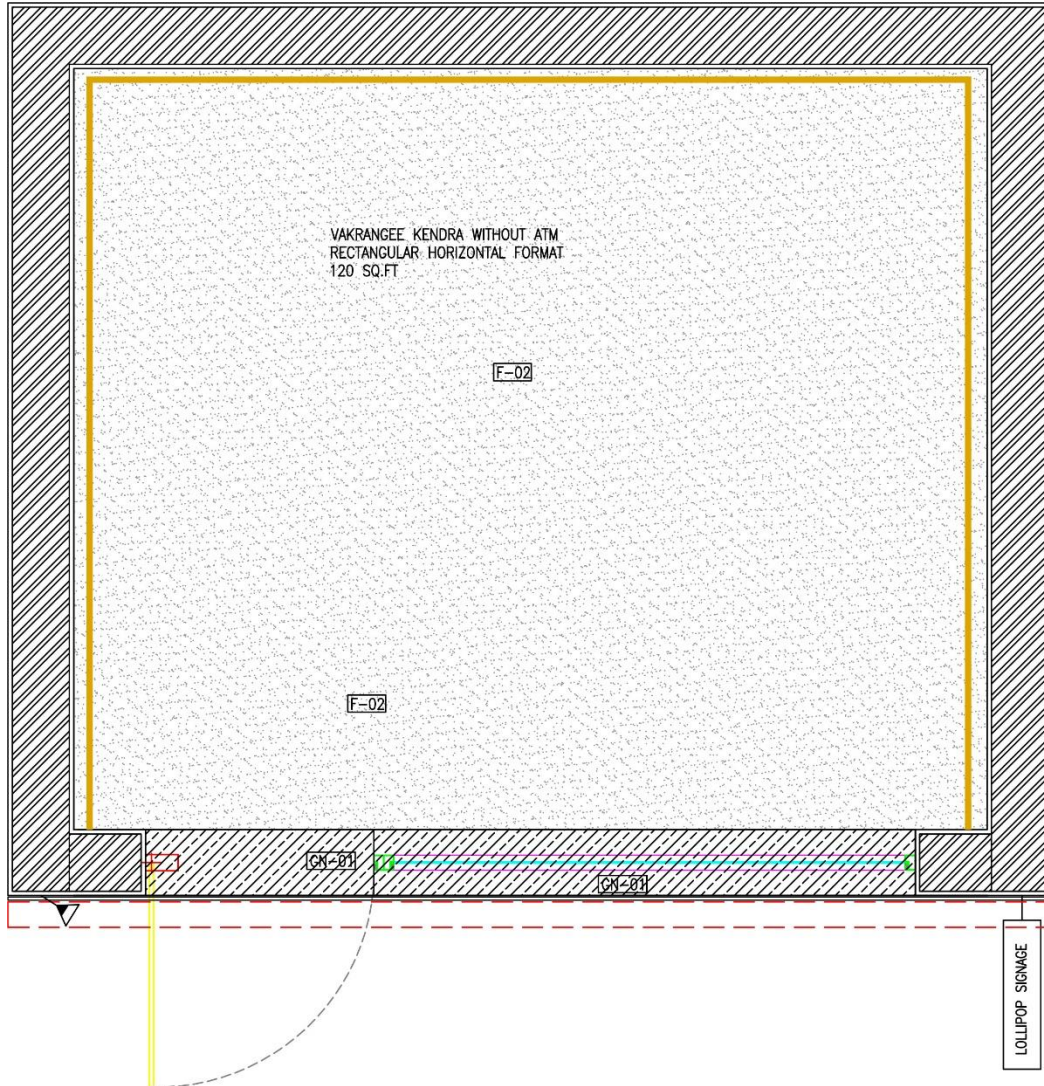



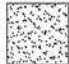


LEGEND		
SYMBOL	SPECIFICATION	MAKE
	F01 ESCARA LIGHT GREY (600X600)	SOMANY CERAMICS
	F02 VINYL FLOORING- ROLL FORM GENTLE GREY (K822-001)	ARMSTORNG
	GN1 GRANITE	
	SK-01 75MM HIGH SKIRTING SAME AS FLOOR TILES (FOR VINYL FLOORING AND TILES FLOORING)	

Note - If the existing Flooring is in good condition then no need to change the Flooring

01
XFL-0101 1:20 FLOORING LAYOUT

Drawings | Rectangular horizontal format - Flooring layout 2/2

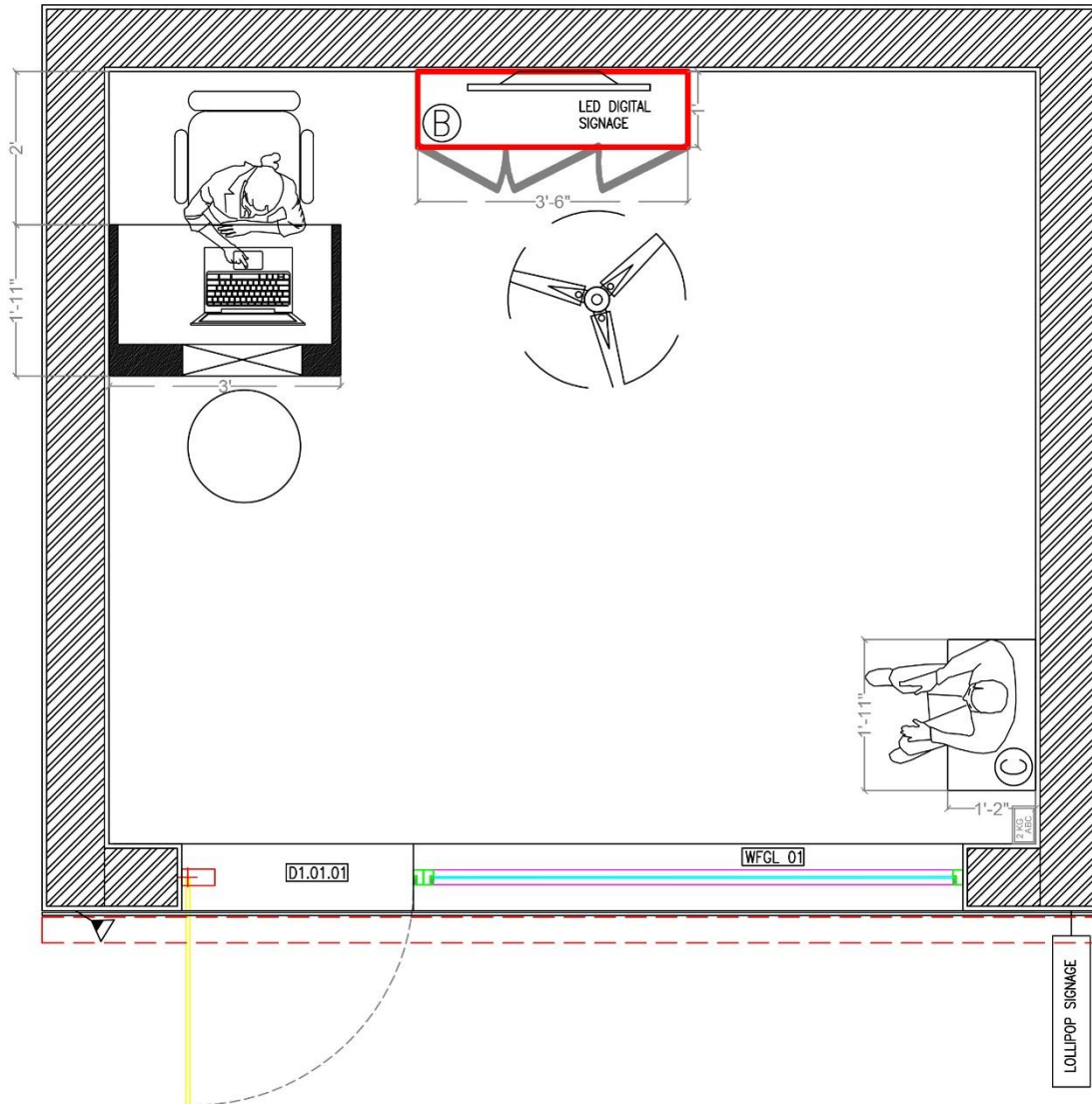


LEGEND		
SYMBOL	SPECIFICATION	MAKE
	F01 ESCARA LIGHT GREY (600X600)	SOMANY CERAMICS
	F02 VINYL FLOORING- ROLL FORM GENTLE GREY (K822-001)	ARMSTORNG
	GN1 GRANITE	
	SK-01 75MM HIGH SKIRTING SAME AS FLOOR TILES (FOR VINYL FLOORING AND TILES FLOORING)	

Note - If the existing Flooring is in good condition then no need to change the Flooring

01
XFL-0102 1:20 FLOORING LAYOUT

Drawings | Rectangular horizontal format - Furniture setting out



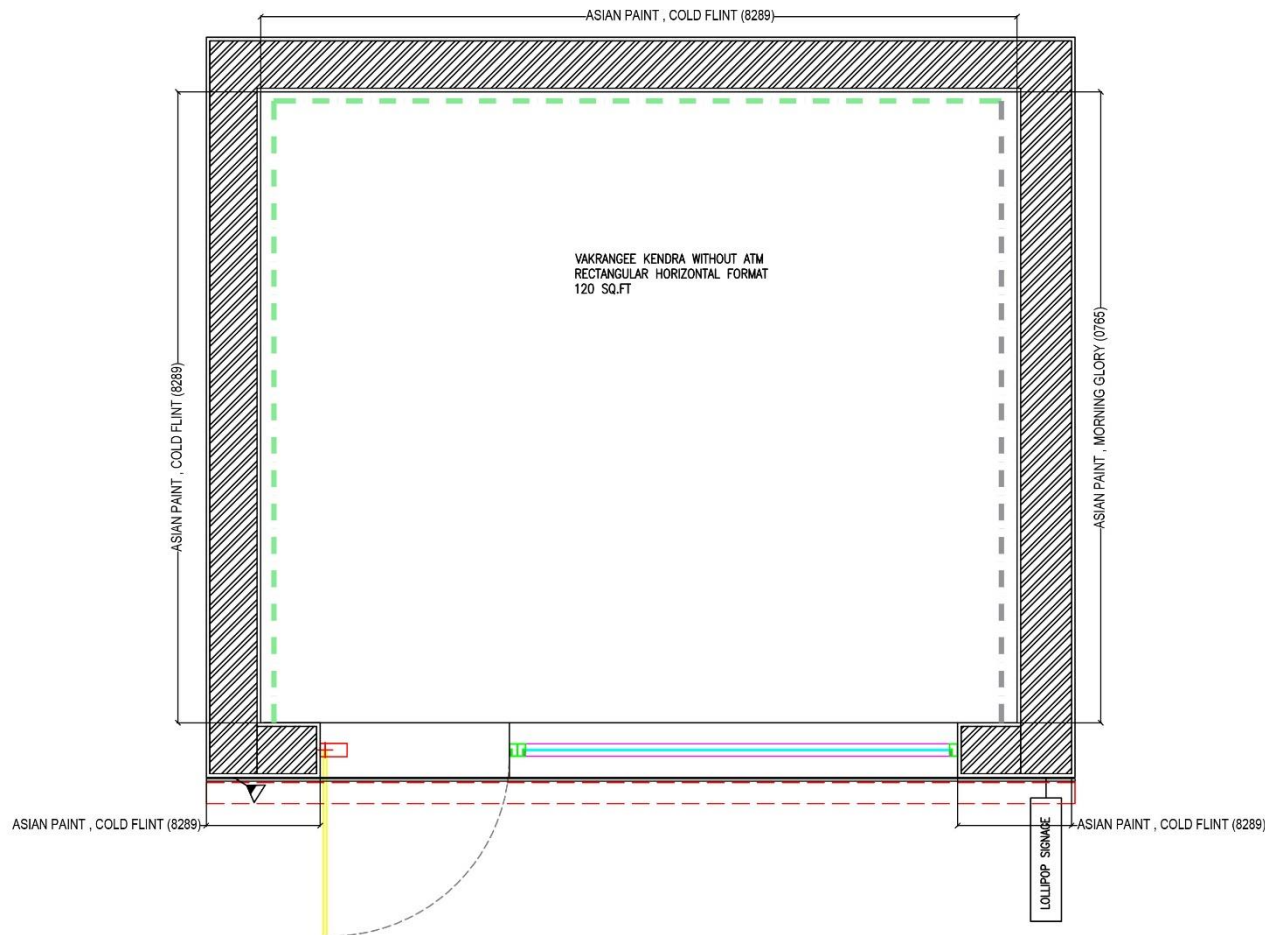
SR.NO.	CODE	DESCRIPTION	DIMENSION	FIXING	NOTES
1	(A)	MODULAR WORKSTATION	1050(L)X600(W)X 925(H)MM	LOOSE	WORKSTATION FINISH IN APPROVED LAMINATE GREENLAM, NORDIC WALNUT (5333) AND SMOG (269).
2	(B)	STORAGE CABINET	1050(L)X300(W)X 750(H)MM	LOOSE	MODULAR STORAGE CABINET FINISHED IN GREENLAM, NORDIC WALNUT (5333) & SMOG (269)
3	(C)	WAITING BENCH	600(L)X350(W)X 450(H)MM	LOOSE	MODULAR WAITING BENCH FINISHED IN GREENLAM NORDIC WALNUT (5333)

Note - for existing franchisee only - If the existing counter table is in good condition and suitable to keep the necessary equipment's with drawers facility then no need to change the counter table.

NOTE : PROVISION OF WAITING BENCH IS PREFERABLE

01 1:20 FURNITURE SETTING OUT
XFS-0101

Drawings | Rectangular horizontal format - Paneling and wall finishes layout



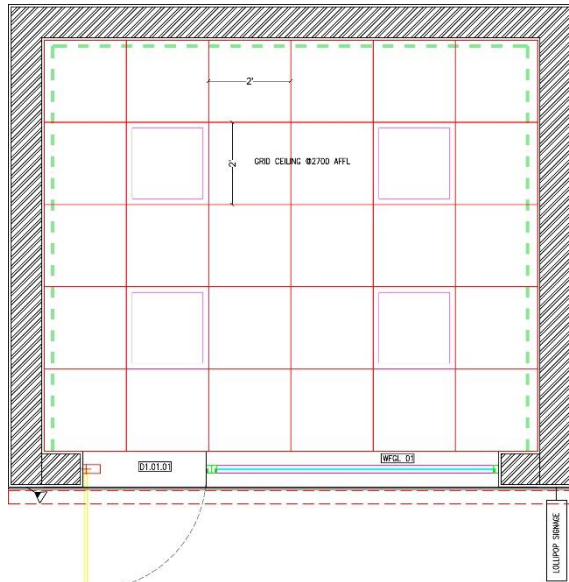
LEGEND OF FINISHES			
SR.NO	FINISHES CODE	DESCRIPTION	
PAINT			
1	PT-01 — : — : — : —	ASIAN PAINT , MORNING GLORY (0765).	
2	PT-02 — : — : — : —	ASIAN PAINT , COLD FLINT (8289).	

NOTE :

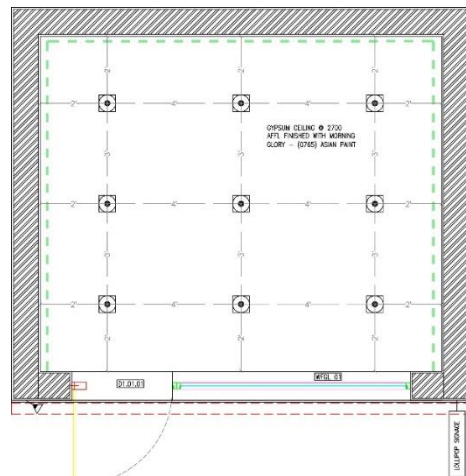
- ROLLING SHUTTER TO BE FINISHED WITH SYNTHETIC ENAMEL PAINT TO MATCH WITH —ASIAN PAINT, MORNING GLORY (0765)

01 1:20 PANELLING LAYOUT
XPL-0101

Drawings | Rectangular horizontal format - RCP & Elec. power layout



01
XRC-0101 NTS: REFLECTED CEILING PLAN
OPTION 1 WITH GRID CEILING



01
XRC-0101 NTS: REFLECTED CEILING PLAN
OPTION 2 WITH GYPSUM CEILING

CEILING FINISHES LEGEND	
REF.	FINISHES
	CH2700 AFFL GRID CEILING WITH 600 X 600MM TILES REGULAR EDGE REGULAR COLOUR/WHITE ANTRONIC- FINE FEASURED
LIGHT FIXTURE LEGEND	
	LED 30W, 30W, 6000K WITH LED EDGE LED & PHILIPS DRIVER
	150 W LED -BRIGHT WHITE -FOCUS LIGHT ABOVE EXTERNAL- MARK SIGNAGE
	18 W RECESSED LED LIGHT 150X150
	36/ 42W/60W FAN @ 2700mm FFL HIGH SPEED/WHITE COLOR HAWKELL/BAJAJ/OMRON & GREDES
ELECTRICAL LEGEND	
	2/3 PIN 6A SWITCH SOCKET ON RAW POWER
	3/3 PIN 16A SWITCH SOCKET ON RAW POWER
	2/3 PIN 16A SWITCH SOCKET EXTERNAL SIGNAGE
	DATA OUTLET (CAT 6)
	WALL FAN @ 2100mm/7' FFL IF REQUIRED
	CEILING FAN @ 2700mm FFL/HIGH SPEED/WHITE COLOR
	32A AC SWITCH @ 2100mm/7' FROM FFL AND AC AT 2400mm/8' FROM FFL
	AC UNIT AT 2400mm/8' FROM FFL
	SWITCH @ 1200mm/4' FROM FFL-ANCHOR ROMA ROMA CLASSIC/ ANCHOR PENTA MODULAR WHITE PLATES
	2 kg ABC FIRE EXTINGUISHER AT 900mm FFL
	CCTV CAMERA @ CEILING HT LVL

NOTES:

LIGHT FITTING - LED LIGHT

WORKSTATION - ALL POINTS BELOW TABLE
TOP

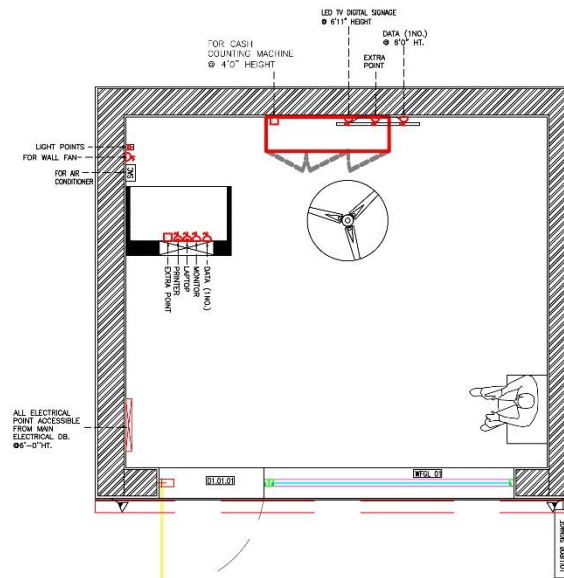
STORAGE CABINET - ALL ELECTRICAL POINTS TO BE AT
900MM

GENSET/INVERTER TO BE PLACED AS PER SITE
CONDITION

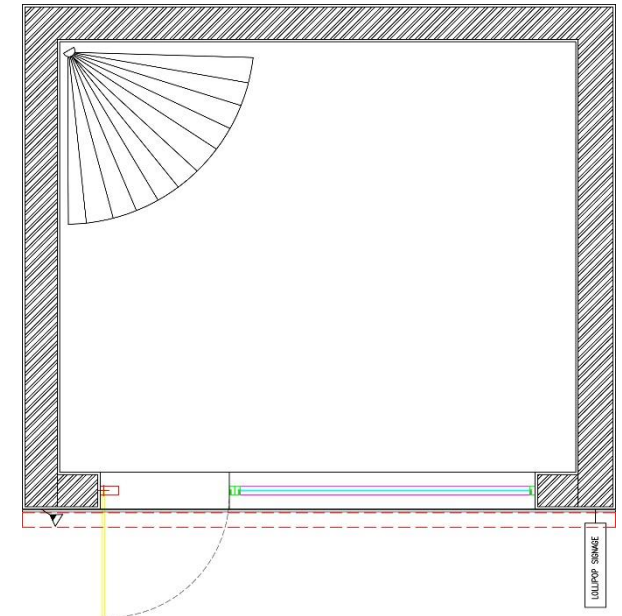
IN CASE IF THERE IS NO STORAGE WITHIN THE SITE, DB
AND INVERTER TO BE KEPT NEAR THE MAIN ENTRY.

VOLTAGE PARAMETERS REQUIRED FOR NORMAL OPERATING
OF ATM MACHINE

AC VOLTAGE - 198V TO 257V WITH 50Hz FREQUENCY



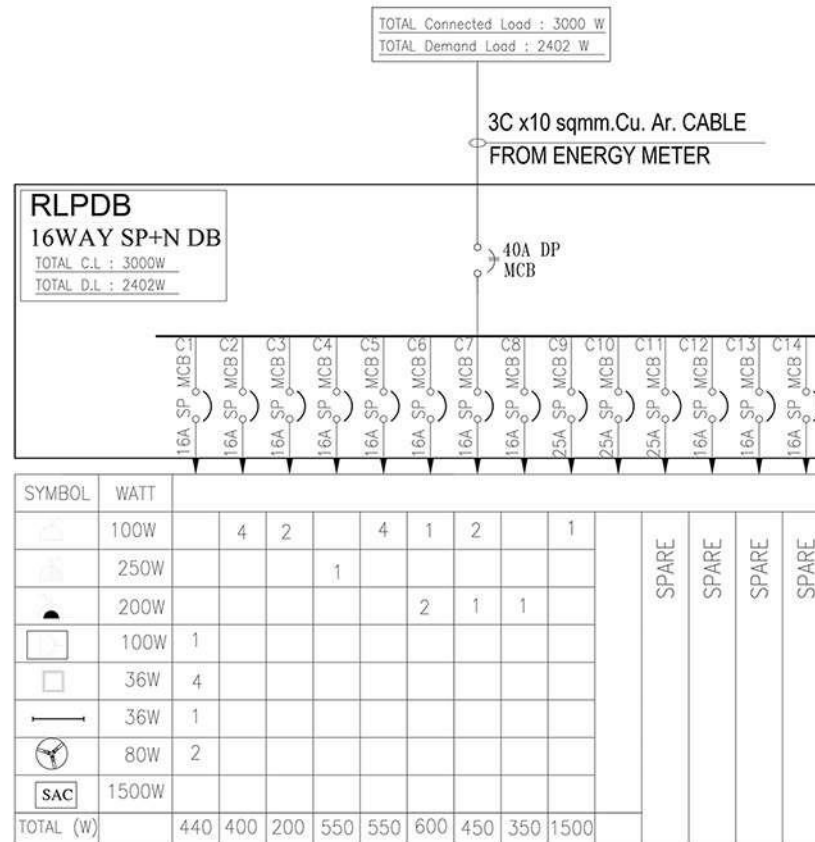
02
XRC-0101 NTS: POWER LAYOUT



Note - for existing franchisee only - If the existing ceiling and lighting is in good condition then no need of changing ceiling and lights

NOTE : • PLEASE KEEP EXTRA CABLE LENGTH OF 2MTR AT THE CCTV CAMERA LOCATION FOR SMOOTH INSTALLATION.
• THE CASH COUNTING MACHINE SHOULD BE VISIBLE IN CAMERA

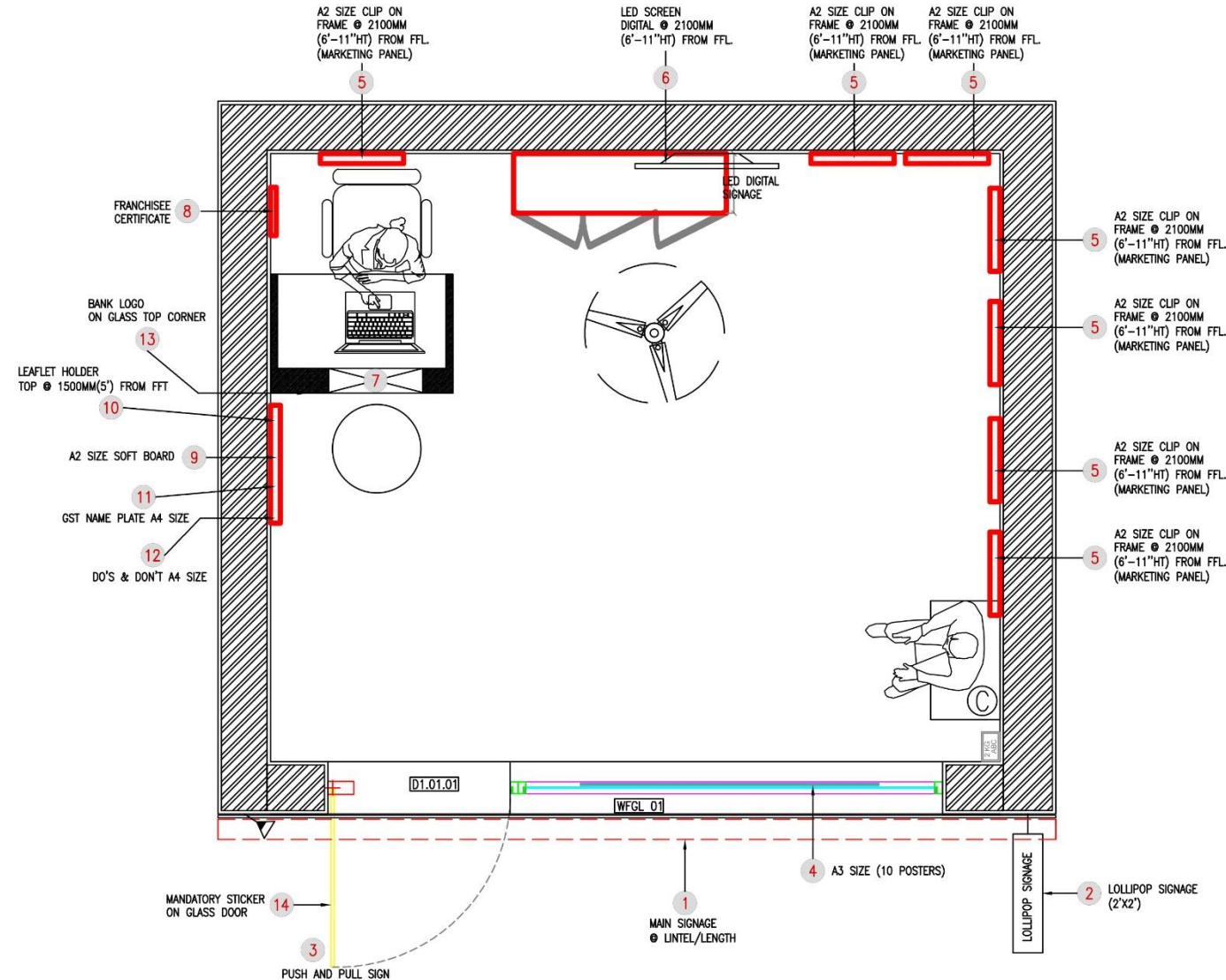
Drawings | Rectangular horizontal format - Electrical SLD



NOTES:

- APPROXIMATE REQUIRED LOAD FOR BRONZE WITHOUT ATM FORMAT -1600 W
- FINAL LOAD TO BE CALCULATED AS PER ACTUAL SITE REQUIREMENTS.
- INVERTER OR GEN-SET LOAD TO BE CALCULATED AS PER SITE REQUIREMENTS.
- FOR ALL POWER POINTS: 3CX2.5 SQMM FRLS FLEXIBLE COPPER CONDUCTOR CABLES.
- FOR SPLIT UNIT : 3CX4 SQMM FRLS FLEXIBLE COPPER CONDUCTOR CABLES.
- FOR ALL LIGHT & FAN CONNECTION: 3CX1.5 SQMM FRLS FLEXIBLE COPPER CONDUCTOR CABLES.
- FOR DATA AND TELEPHONE: 4 PAIR CAT 6 UTP WIRE.

*** PLEASE REFER PAGE NO – 50 FOR DETAILS**



01
XSL-0101 1:20 SIGNAGE LAYOUT

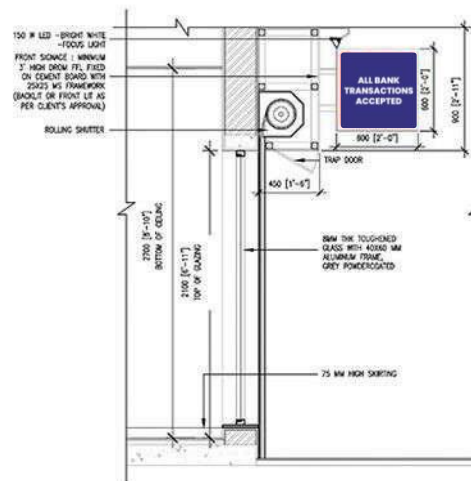
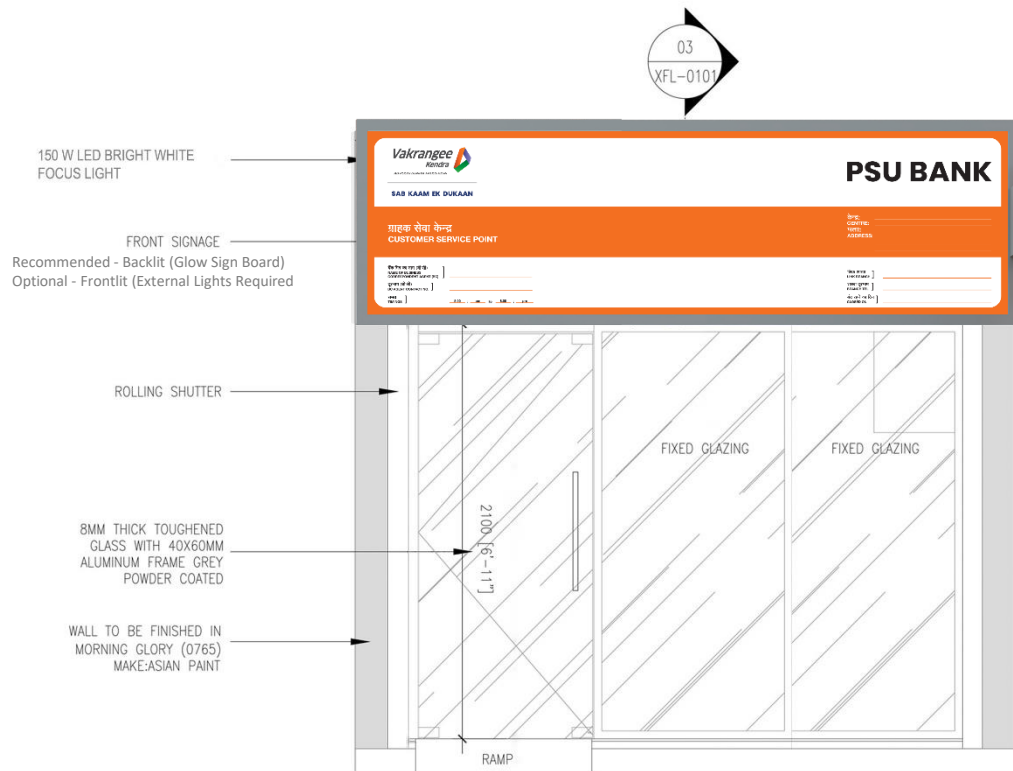
Note - Clip on Frame is optional. A2 posters can be installed in normal photo frame or it can be pasted directly on smooth wall.

Typical DETAILS

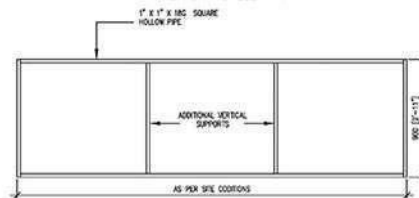
drawings

05.4

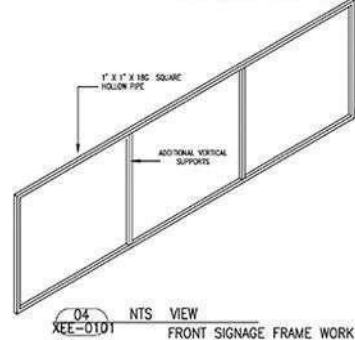
Drawings | Typical details - External elevations



03 1:20 SECTION
XEE-0101 EXTERNAL ELEVATION



04 NTS ELEVATION
XEE-0101 FRONT SIGNAGE FRAME WORK



04 NTS VIEW
XEE-0101 FRONT SIGNAGE FRAME WORK

LOLLIPOP SIGNAGE

OPTION 1
DOUBLE SIDED WALL MOUNTED FLANGE
SIZE - 2ft x 2ft x 5 inch(depth)

MATERIAL SPECS:
WHITE COLOUR ACRYLIC MOLDED FLANGE WITH ALUMINUM
FRAME.
TO BE FIXED WITH M. S BRACKETS ON WALL WITH
FASTENERS.
VINYL - STAR/3M/LG VINYL
PRINTING - 3RD GENERATION HP LATEX PRINTING OR
PLOTTER CUT VINYL
LIGHT - LED STRIP LIGHTING SYSTEM

OPTION 2
GLOW SIGNBOARD WITH 1"x1" MS SQUARE PIPE BOX
FRAME WITH ALUMINUM L ANGLE ON BORDER FOR EDGE
TO EDGE LIGHTING WITH LED STRIP / TUBELIGHT.
PRINTING - BACKLIT STARFLEX ON HP LATEX PRINTER
WITH BACK TO BACK FLEX PRINTING WITH 3 YEAR
WARRANTY

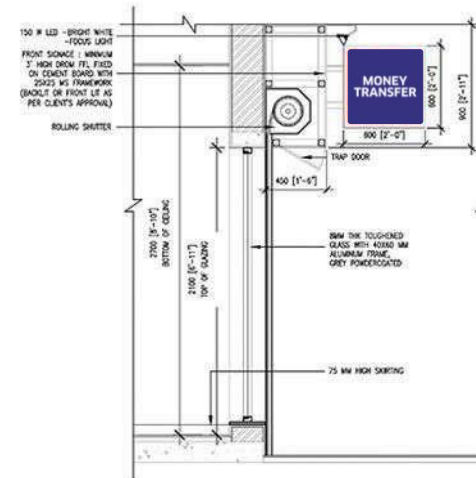
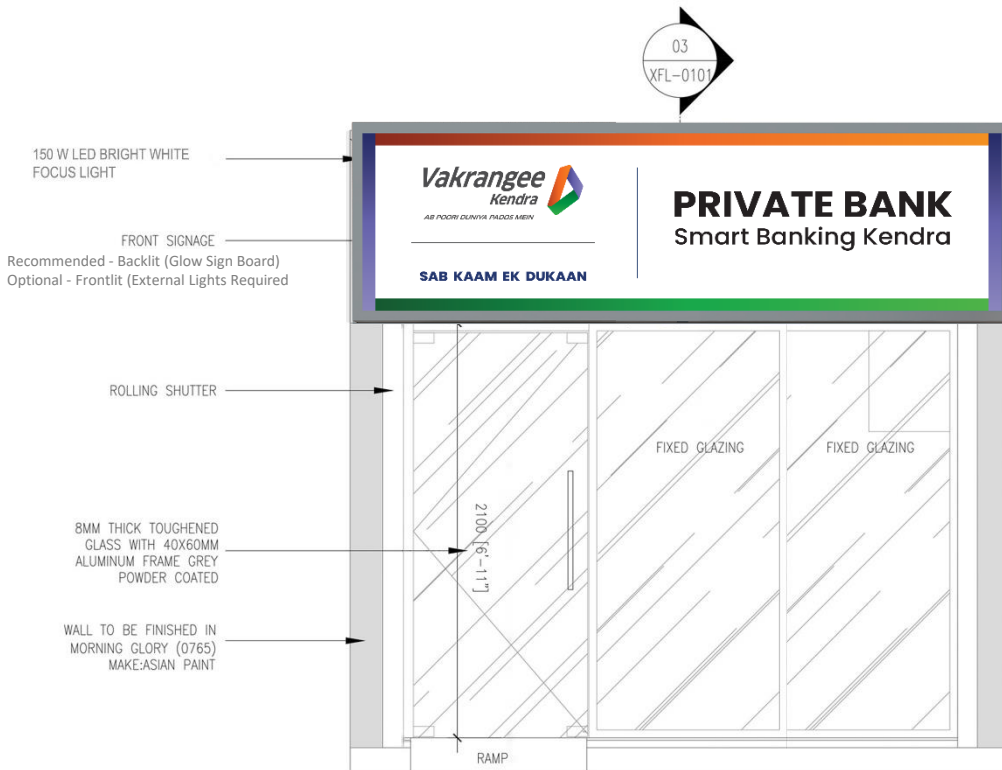
Note:

- **Lollipop : Mandatory. Franchisee's can opt for additional location apart from as shown in this page.**
- **Main Signboard: Flex Artwork will be Provided by Vakrangee**

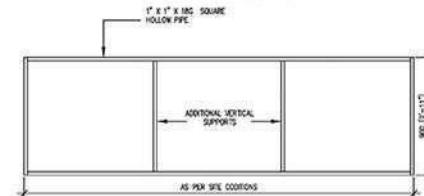
Main Signage Specifications

- Flex Media - StarFlex - Avery dennison - LG Flex quality - Front lit flex with Grey or Black back - minimum 14 oz.
- Printing technology - HP latex - Third Generation Lamination - Gloss

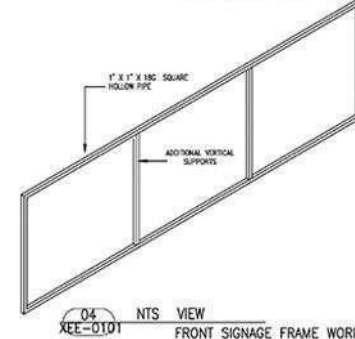
Drawings | Typical details - External elevations



03
XEE-0101
1:20 SECTION
EXTERNAL ELEVATION



04
XEE-0101
NTS ELEVATION
FRONT SIGNAGE FRAME WORK



LOLLIPOP SIGNAGE

OPTION 1
DOUBLE SIDED WALL MOUNTED FLANGE
SIZE - 2ft x 2ft x 5 inch(depth)

MATERIAL SPECS:
WHITE COLOUR ACRYLIC MOLDED FLANGE WITH ALUMINUM FRAME.
TO BE FIXED WITH M. S BRACKETS ON WALL WITH FASTENERS.
VINYL - STAR/3M/LG VINYL
PRINTING - 3RD GENERATION HP LATEX PRINTING OR PLOTTER CUT VINYL
LIGHT - LED STRIP LIGHTING SYSTEM

OPTION 2
GLOW SIGNBOARD WITH 1"x1" MS SQUARE PIPE BOX FRAME WITH ALUMINUM L ANGLE ON BORDER FOR EDGE TO EDGE LIGHTING WITH LED STRIP / TUBELIGHT.
PRINTING - BACKLIT STARFLEX ON HP LATEX PRINTER WITH BACK TO BACK FLEX PRINTING WITH 3 YEAR WARRANTY

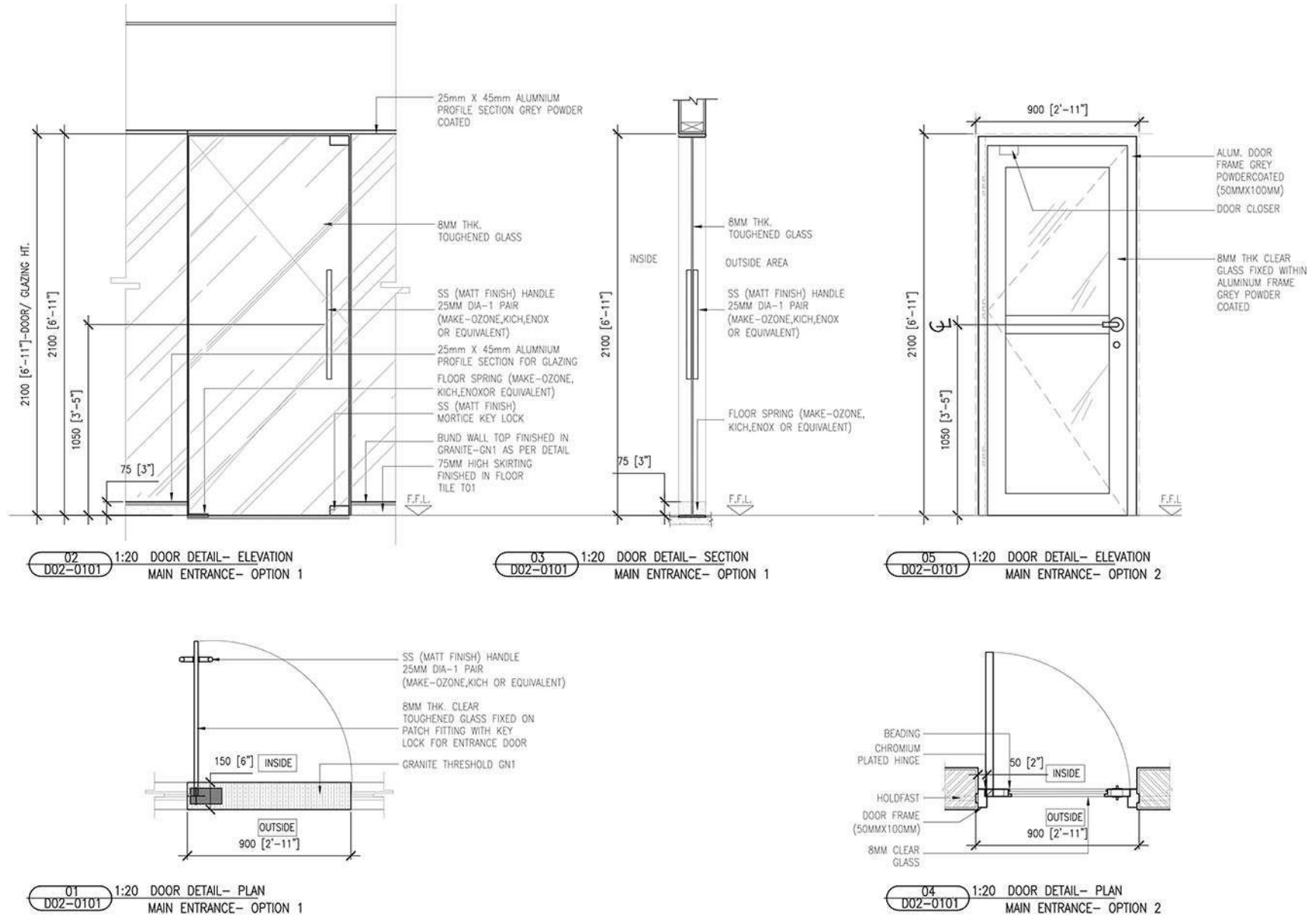
Note:

- Lollipop : Mandatory. Franchisee's can opt for additional location apart from as shown in this page.
- Main Signboard: Flex Artwork will be Provided by Vakrangee

Main Signage Specifications

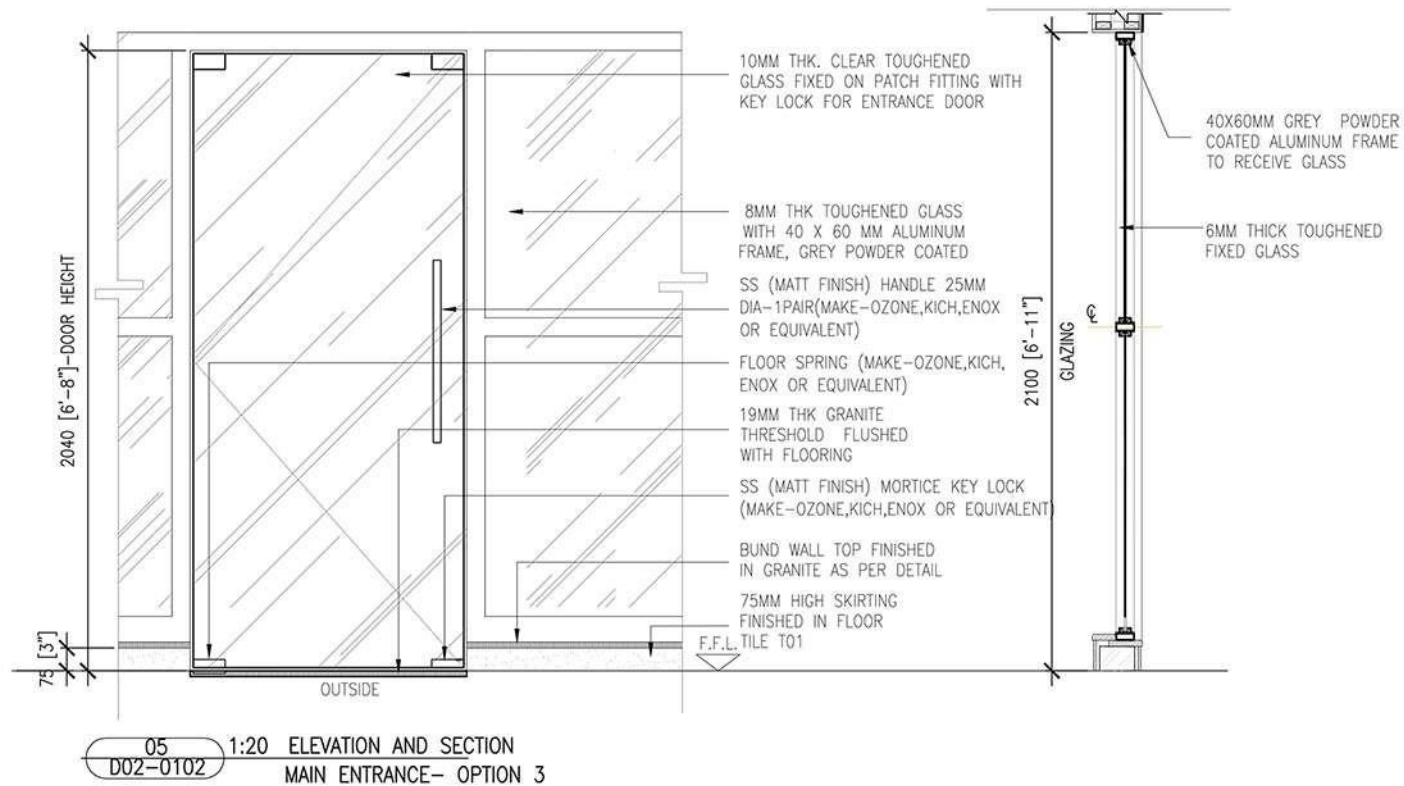
- Flex Media - StarFlex - Avery dennison - LG Flex quality - Front lit flex with Grey or Black back - minimum 14 oz.
- Printing technology - HP latex - Third Generation Lamination - Gloss

Drawings | Typical details - Door 1/2



Note - for existing franchisee only - In case of existing wooden doors, franchisee are requested to contact KDB spoke for guidance

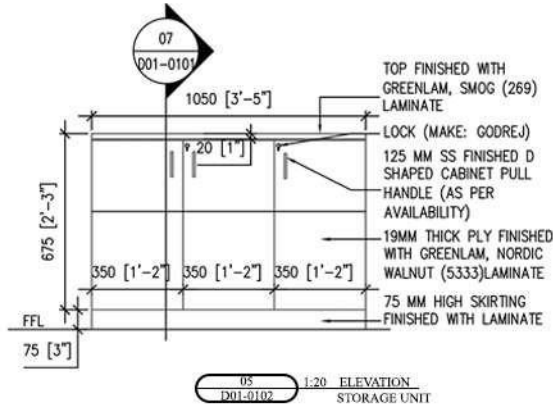
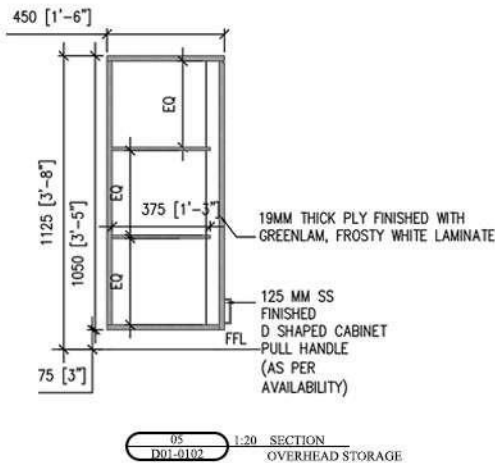
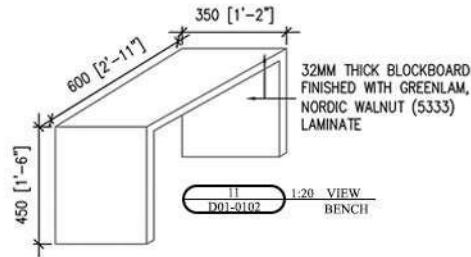
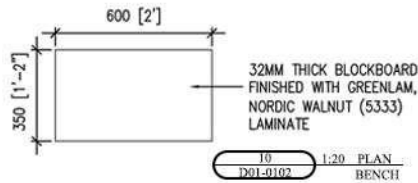
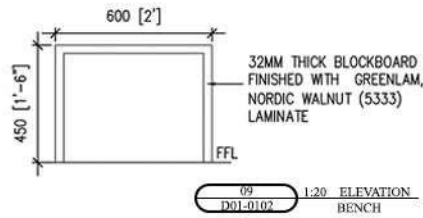
Drawings | Typical details - Door 2/2



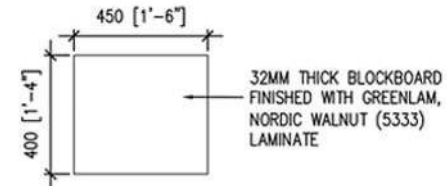
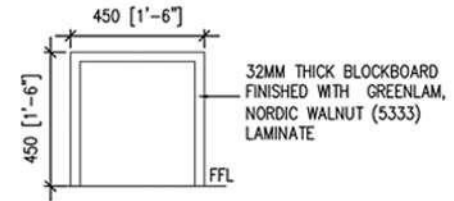
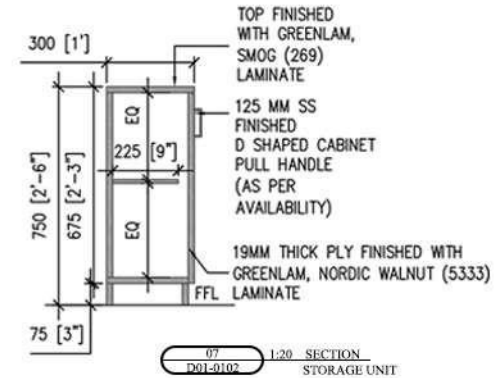
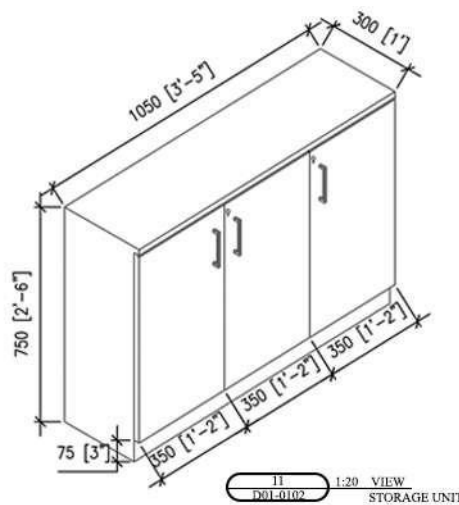
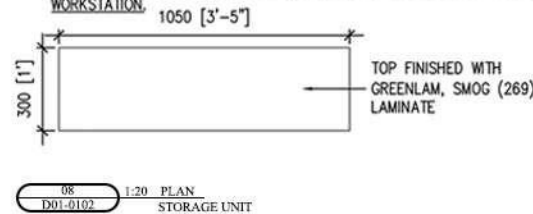
NOTE:

- TOUGHENED GLASS IS RECOMMENDED FOR SAFETY. IF 8 MM TOUGHENED GLASS IS NOT AVAILABLE, FRANCHISEE TO USE 12 MM CLEAR GLASS.
- IF GREY POWDER COATING IS NOT AVAILABLE, FRANCHISEE TO USE NATURAL ALUMINUM FINISH.

Drawings | Typical details - Furniture 1/3

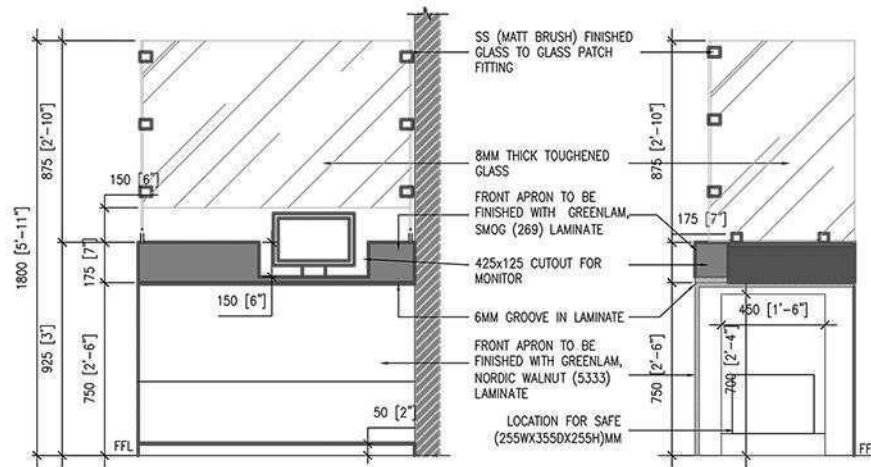


NOTE: LENGTH OF THE STORAGE UNIT WILL BE SAME AS THE LENGTH OF WORKSTATION.

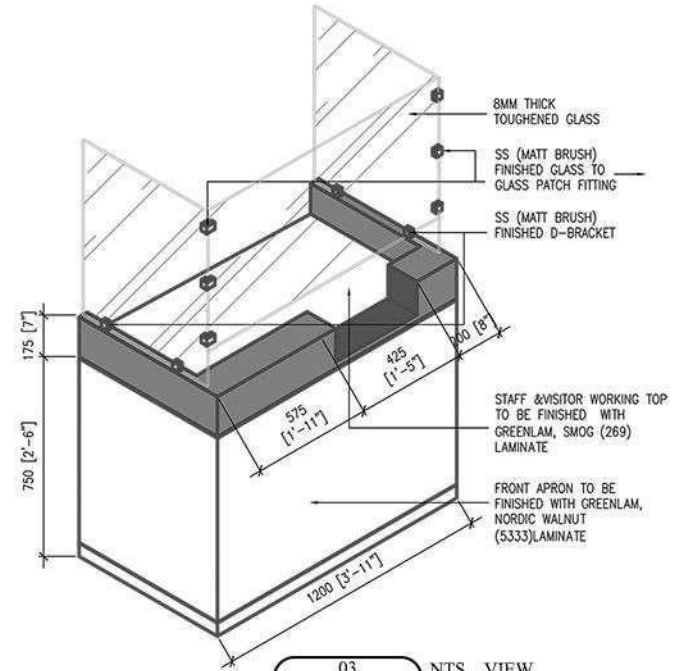


Note - for existing franchisee only - If the existing Storage facility is available in good condition and suitable to keep the necessary documents then no need to change the storage cabinet.

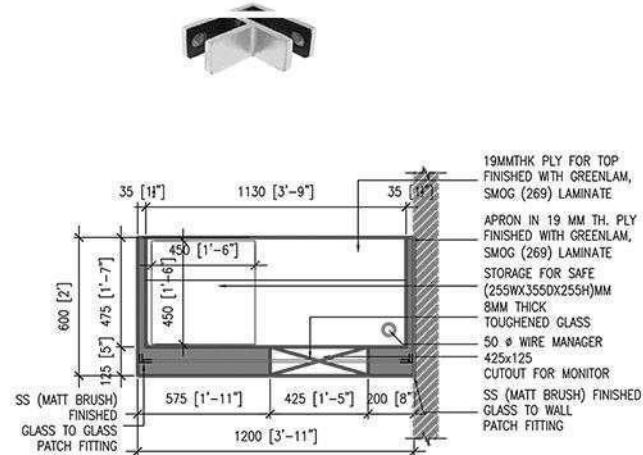
Drawings | Typical details - Furniture 2/3



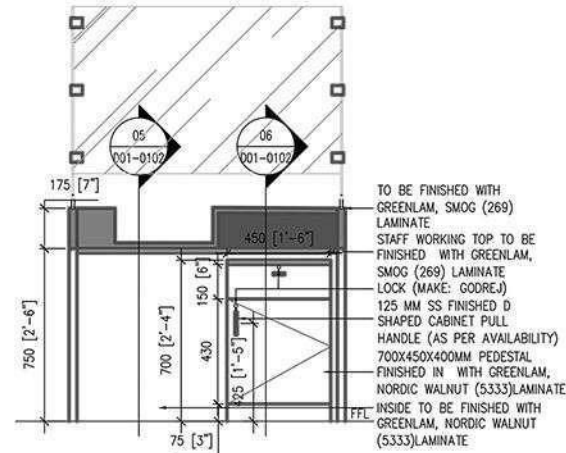
02
D01-0102 1:20 FRONT ELEVATION
WORKSTATION



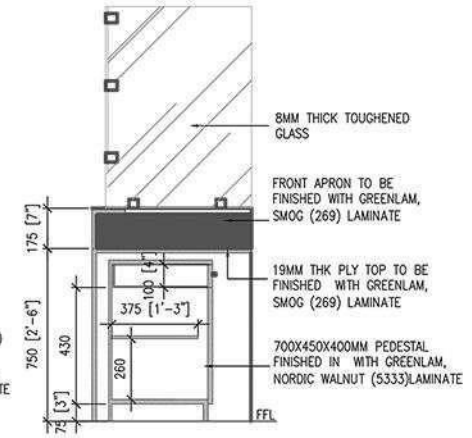
03
D01-0102 NTS VIEW
WORKSTATION



01
D01-0102 1:20 PLAN
WORKSTATION



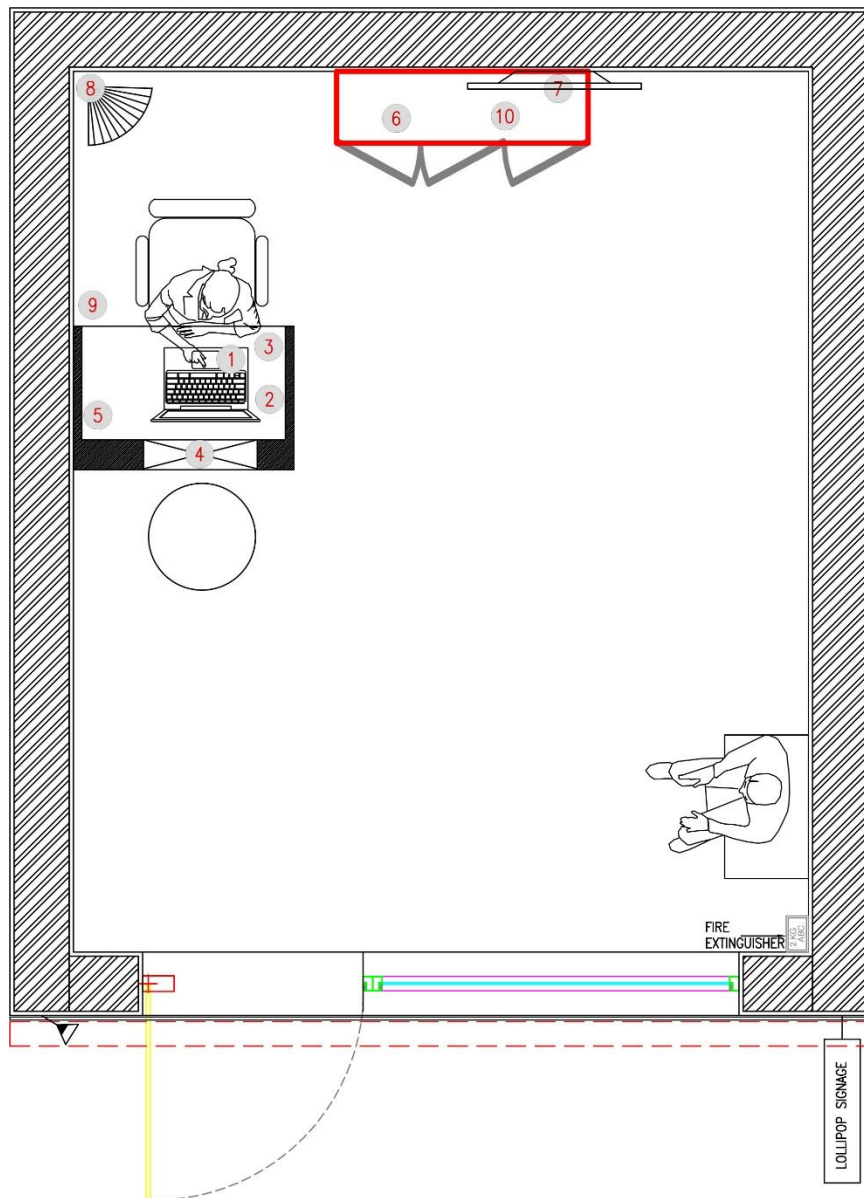
04
D01-0102 1:20 INTERNAL ELEVATION
WORKSTATION



06
D01-0102 1:20 SECTION
WORKSTATION

Drawings | Typical details - Placement of Equipments

Equipments to be purchased and Installed by Franchisee



1. Laptop
(QTY – 1 Nos.)



2. Single Finger
Biometric Device
(QTY – 1 Nos.)



3. Pin Pad Device with
Card Swipe- Secrecy
(QTY – 1 Nos.)



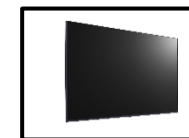
4. Display Monitor
(Any Brand)
(QTY – 1 Nos.)



5. All in One
Printer (Any Brand)
(QTY – 1 Nos.)



6. Cash Counting and
Fake Currency Machine
(QTY – 1 Nos.)



7. Digital Signage
(Optional)
(QTY – 1 Nos.)



8. CCTV Camera
(QTY – 1 Nos.)



9. Safe with Lock
(QTY – 1 Nos.)



10. Weighing Scale
(Qty. 1 Nos. –
Optional)

Sr. No.	Equipment	Specification
1	Laptop	Laptop: Essential : 4GB RAM, 128/256 GB SSD Drive, Micro SD Card Slot, Windows 10 Home, 1HDMI Port, 2 USB 2.0
2	Single Finger Biometric Device	Mantra Model #MFS 100 or Morpho Model MSO1300 E3 USB
3	Pin Pad Device with Card Swipe- Secrecy	PAX POS : D180S PCI X3 Mpos
4	Display Monitor	LCD / LED Monitor: TFT-LCD / LED Panel
5	Multi Function Device	Multi Function Color Printer, Scanner and Copier
6	Cash Counting and Fake Currency Machine	Currency Counting & Fake note Detector: UV/MG/IR Detection, Feeder & Holder capacity-100 note or higher
7	CCTV Camera	30 Days Backup

material palette
and specifications

06

Material Palette and specifications

Laminate finish



NORDIC WALNUT
GREENLAM LAMINATE -
5333



OR AMERICAN WALNUT
- MERINO LAMINATES -
14538



SMOG
GREENLAM LAMINATE -
269



MISTY GREY - MERINO
LAMINATES - 21039



FROSTY WHITE
GREENLAM LAMINATE
- 113

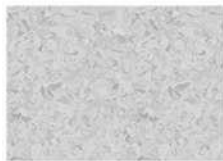
Flooring



600 X 600 ESCARA LIGHT
GREY TILES, SOMANY



OR GRANITE GRIS MATT
KAJARIA TILES



VINYL FLOORING - GENTLE
GREY ARMSTRONG



VINYL FLOORING - SMOKEY HILLS
- RESPONSIVE FLOORING



BLACK GRANITE

Flooring



CLASSIC IVORY, WELSPUN
FLOORING LPT - 1039354



SANDCASTLE, WELSPUN
FLOORING LPT - 1039364

Lights



2'X2' CEILING LIGHT WITH
EDISO LED AND PHILIPS
DRIVER

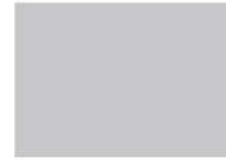


6" SQUARE 2C18W LED
LIGHT - SYSKA/HAVELS/
PHILIPS

Wall



PLASTIC PAINT MORNING
GLORY (0765) ASIA PAINT



PLASTIC PAINT - COLD
FLINT (8289) ASIAN PAINT

Aluminum Finish



GREY POWDER COATED
(RAL 9004)
(OPTION 1)



NATURAL ALUMINIUM
FINISH (OPTION 2)

Ceiling



2'X2' ARMSTRONG GRID
CEILING



INDIA GYPSUM CEILING



PLASTIC PAINT MORNING
GLORY (0765)

MATERIAL SPECIFICATIONS

	Option 01	Option 02	Option 03
Commercial Plywood/boards	Century Plywood	Greenply	Anchor or any local make
Paints	Asian Paints	Dulux paint	
ACP	Alucobond	Alstrong	Alstone
Furniture Hardware	Enox	Ozone	Local make as per availability
Glass	Float glass- Modiguard, Float glass - St. Gobain	Toughened Glass is preferred in all areas Considering the safety aspect	
Rolling shutter	G.I Perforated Type finished with white synthetic enamel paint	Corrugated finished with white synthetic enamel paint	Local make as per availability
Wires	Polycab	Finolex	RR Cables
Switches/Socket	Anchor Roma	Legrand	Hevalls
MCCB/MCB	Legrand	Schneider	Siemens
DB	Legrand	Schneider	Siemens
Telephone wire/Data/CAT 6	D-Link	POLYCAB	Legrand

The new design incorporates materials and textures that have been selected to create new experience for customers at Vakrangee Kendra.

A neutral base palette has been used which will allow durability and longevity in the design.

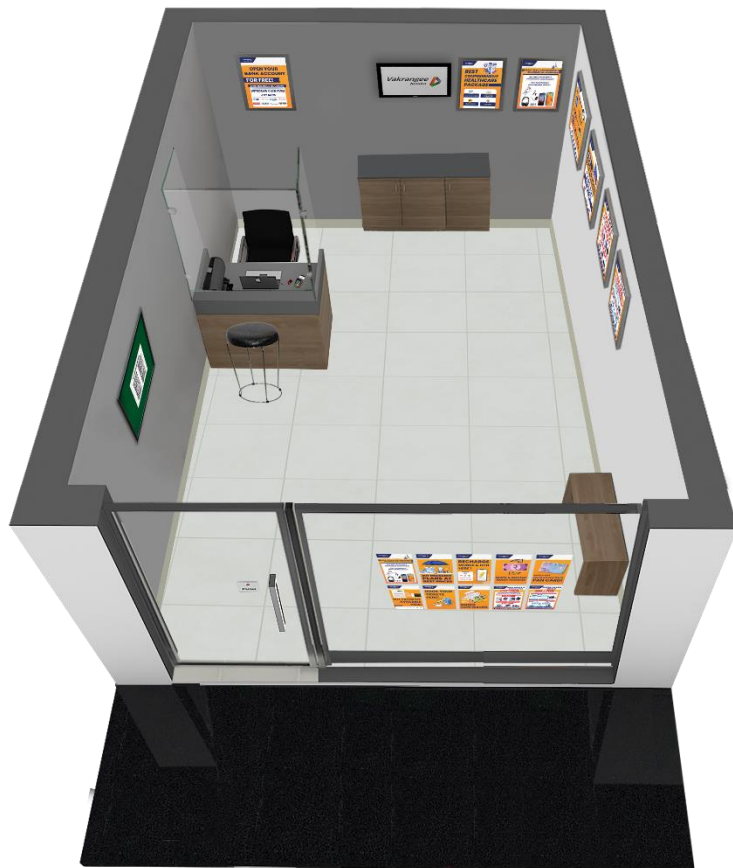
The combination of finishes and graphics creates authenticity and variation within the palette to allow flexibility.

- A neutral base palette allows for longevity
- The graphics are carefully chosen and created and kept light and bright for a sense of comfort

furniture overview

07

Furniture overview



1 - STORAGE : 1200 MM AS PER
DETAIL



2 - WAITING BENCH : 600 MM /
900MM AS PER DETAIL



3 - WORKSTATION (OUTSIDE) :
1200MM AS PER DETAIL



3 - WORKSTATION (INSIDE) :
1200MM AS PER DETAIL



4 - EXECUTIVE CHAIRS (OPTION 1) :
AMARDEEP/FEATHERLIE/GODREJ
OR SIMILAR MAKE
FABRIC: BLACK COLOUR



4 - EXECUTIVE CHAIRS (OPTION 2) :
AMARDEEP/FEATHERLIE/GODREJ
OR SIMILAR MAKE
FABRIC: BLACK COLOUR



5 - CUSTOMER CHAIRS (OPTION 1) :
AMARDEEP CHAIRS/FEATHERLITE/
GODREJ OR SIMILAR MAKE
FABRIC: BLACK COLOUR



5 - CUSTOMER CHAIRS (OPTION2) :
AMARDEEP CHAIRS/FEATHERLITE/
GODREJ OR SIMILAR MAKE
FABRIC: BLACK COLOUR



* Optional - Only in case of space limitations Round Stool can be used

6 - CUSTOMER CHAIRS (OPTION 1) :
AMARDEEP/FEATHERLIE/GODREJ
OR SIMILAR MAKE
FABRIC: BLACK COLOUR

6 - CUSTOMER CHAIRS (OPTION 2) :
AMARDEEP/FEATHERLIE/GODREJ
OR SIMILAR MAKE
FABRIC: BLACK COLOUR

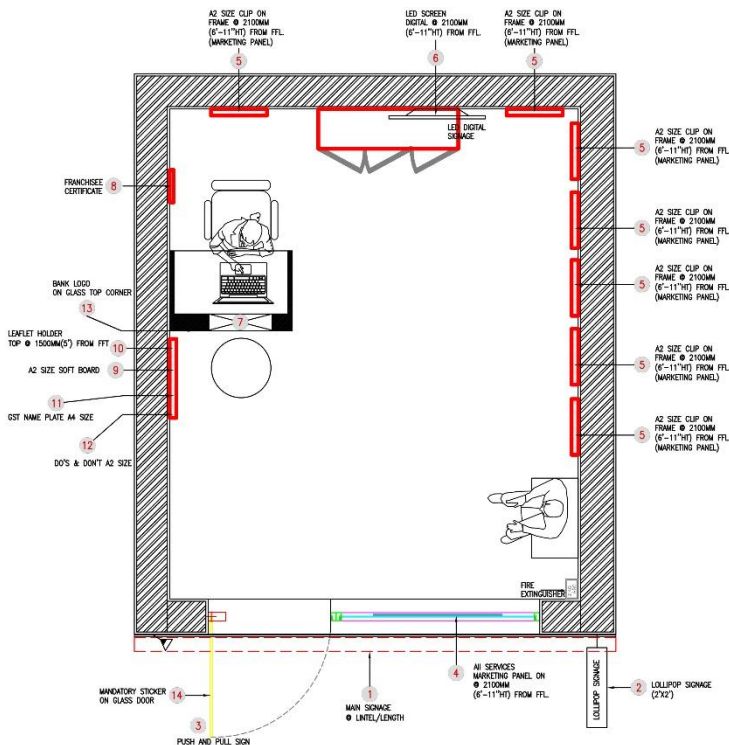
* Images are for reference only

Note - for existing franchisee only - If the existing Chairs/Stools are available in good condition then no need of buying new Chairs/Stool

Marketing elements
and signage

08

Marketing element and signage



07 - Digital Screen



09 - A2 size soft board.



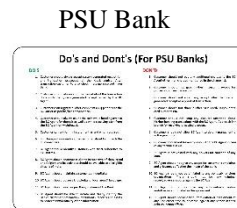
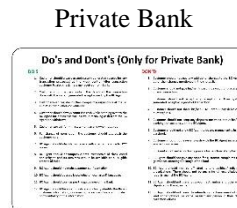
05 - A2 size clip on frame. For Marketing Panel



06 - LED Digital Signage



02- Lollipop Signage



12- Do's and Don'ts



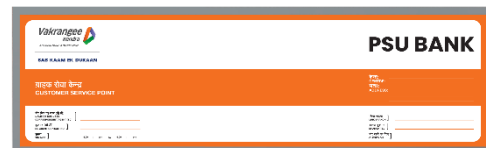
08 - Franchisee Certificate Artwork will be provided by Vakrangee.



14 - Covid-19



10 - Leaflet holder



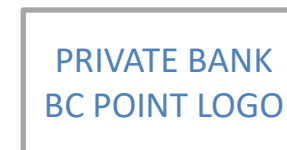
01 - Main Signage @ lintel level - length as per site. Artwork will be provided by Vakrangee



03 - Push and pull sign



11 - GST Name plate

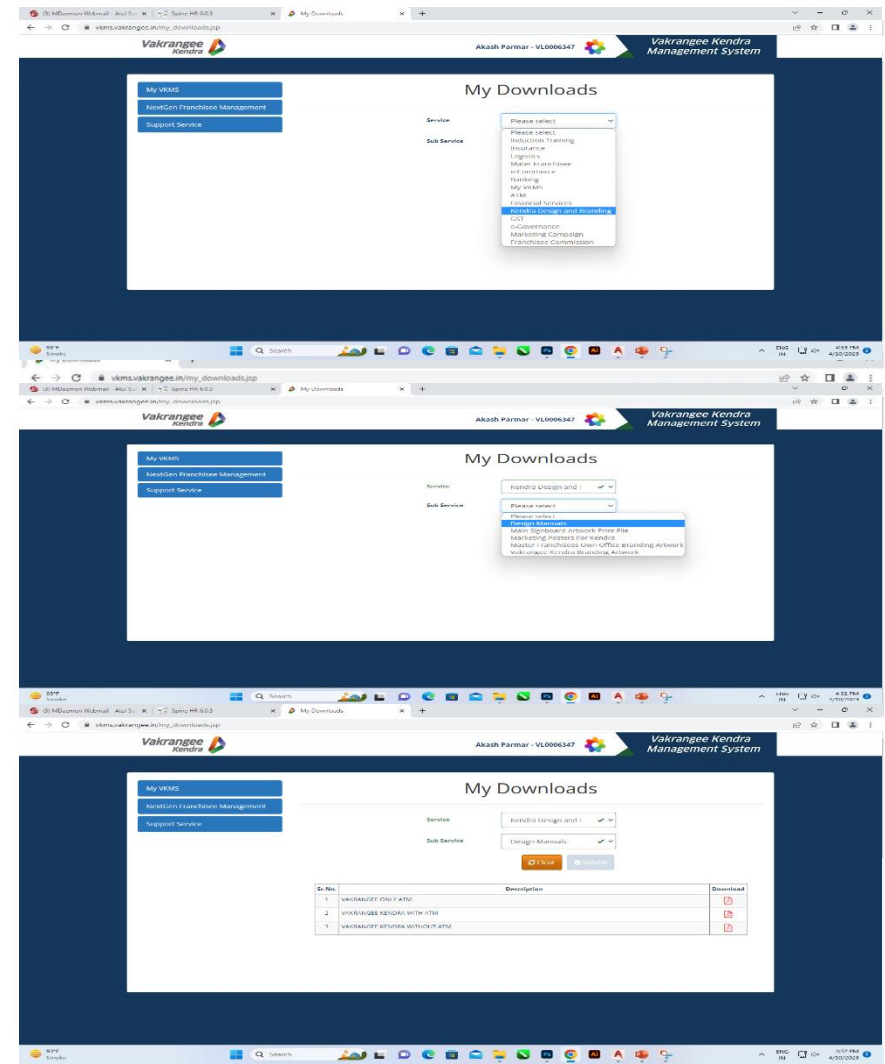
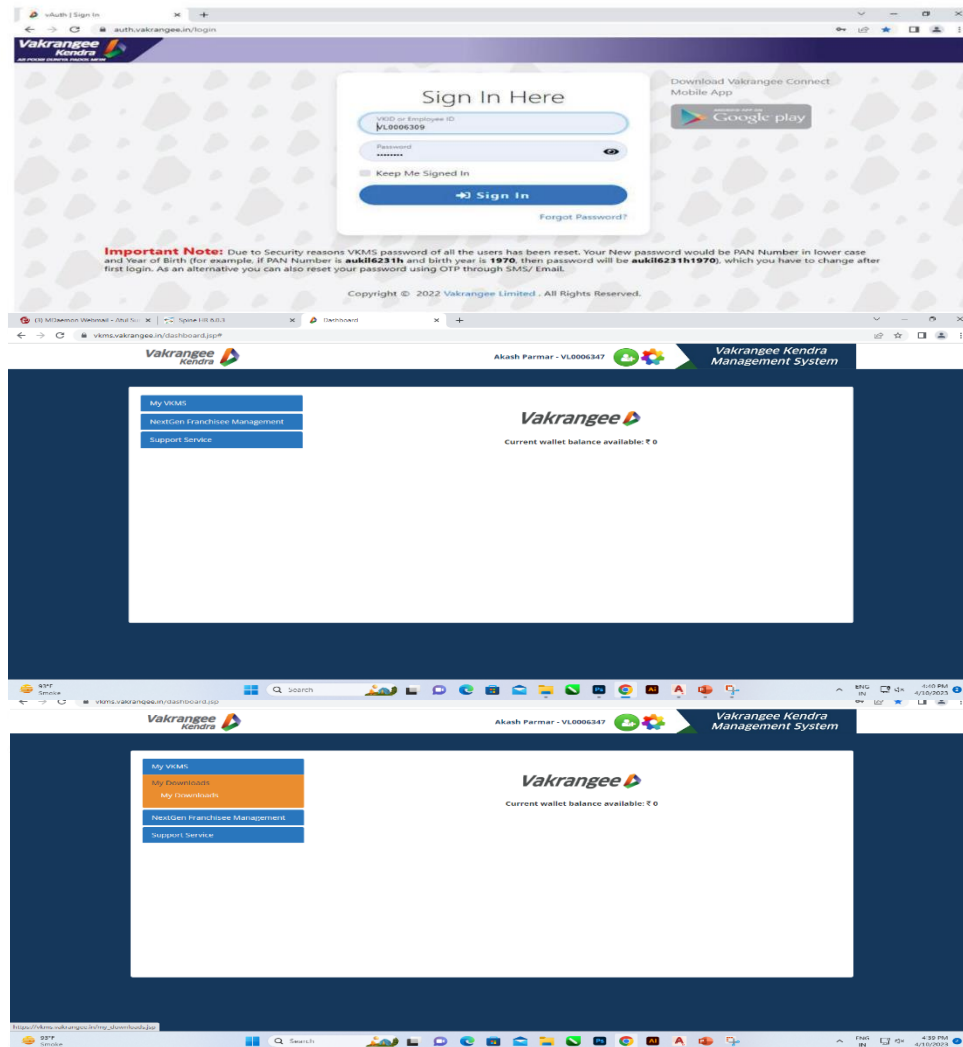


13 - Bank logo for Bank counter - 12"x18" Clear Vinyl Sticker



04 - A3 Size - 10 Posters For Marketing

Path to Marketing Posters for Kendra



Note :-

- Logging to VKMS.
- Click on my VKMS tab.
- Select my download option.
- In services drop down select Vakrangee Kendra Design & Branding.
- In sub services drop down select Design Manuals, Marketing Posters For Kendra and Vakrangee Kendra Branding Artwork.
- Then select and press whichever details required..

Covid - 19 Guidelines

09

How Does COVID-19 Spread

Our design suggestions and measures are based on the world health organization (WHO) research on the spread of COVID-19

- People can catch COVID-19 from others who have been infected by virus. The disease can spread from person to person through small droplets from the nose or mouth which are spread when a person with COVID-19 coughs or exhales.

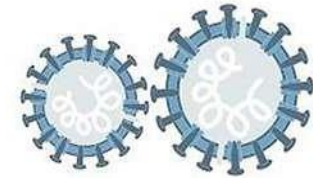
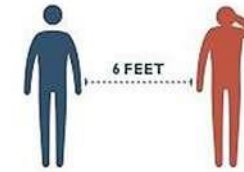
Design measure: Shielding

- These droplets land on objects and surfaces around the person. Other people then catch COVID-19 by touching these objects or surfaces, then touching their eyes, nose or mouth

Operational measure: Sanitization

- People can also catch covid-19 if they breathe in droplets from a person with covid-19 who coughs out or exhales droplets. This is why it is important to stay more than 1.8 meter (6 feet) away from a person who is sick.

Planning measure: Social distancing



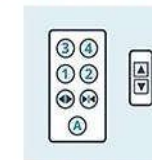
The virus usually spreads from **CLOSE PERSON-TO-PERSON CONTACT** through respiratory droplets from coughing and sneezing.

The virus may also spread **THROUGH AIRBORNE TRANSMISSION**, when tiny droplets remain in the air even after the ill person leaves the area.

...but it can also be left on objects and surfaces.



Pens



Lift buttons



Keyboard & mouse



Doorknobs



Touch-screens devices



Kitchen surfaces

So if you touch something contaminated and then shake hands or hug another person, you will transmit the virus.



Thermal Screening



- Body temperature must be measured before the Staff and Customers enter the Vakrangee Kendra.
- Any abnormality to be recorded and reported to local health officials.

Maintenance Guidelines - For Kendra Interior and Branding Elements.

Franchisees are advised to follow the Maintenance Guidelines for ensuring intended life of the elements and also to keep them in good order and conditions

1. Main Sign Board:

- 1-Once in a month Clean with Mild Soap water using soft cloth.
- 2- In case of Bird shit or any other issue clean immediately with mild soap and water.

2. Vinyl / Sunboard Posters:

- 1- Once in Fortnight clean with mild soap water using soft cloth. Do not use brush or coarse material.
- 2- If corners are lifted up or become loose then use feviquick or any instant adhesives to fix it immediately.

3. Clip on Frames/ Acrylic Hanging frames.

- 1- Check fixing screws and tighten if it is loose.
- 2- Clean the frames with mild soap water using soft cloth.

4. Leaflet Holder:

Wipe with soft cloth as and when required. Do not use force.

5. Floor Mat/Vitrified Tiles:

Weekly cleaning using mild soap water or as and when required.

6. Wall Paint:

Monthly cleaning with soft wet cloth in case of Distemper or Oil paint.

7. Wooden Furniture:

Monthly cleaning with dry or wet soft cloth.

8. Door Glass /Counter table Glass:

Clean Glass regularly using glass cleaning liquid.

9. LED lights:

Regular cleaning with soft wet cloth.

10. Door Mat:

Regular cleaning by dipping in 1% Sodium Hypochlorite.

11. Chairs/ Waiting Bench:

Regular cleaning with soft wet cloth.

12. Dustbin:

- 1- Destroy contents of the Dustbin daily.
- 2- Use plastic Dustbin bags.
- 3- Wash daily with Dettol water or use disinfectants.

Advisable:

- 1- Disinfect daily whole Kendra using approved disinfectants.
- 2- Do regular pest control of Kendra.

Vakrangee Limited

Vakrangee Corporate House, Plot No.93, Road No.16,
MIDC Marol, Andheri (East), Mumbai - 400 093.
Telephone No. +91 22 67765100
www.vakrangee.in

Thank You

| www.vakrangee.in |

Copyright : This document is copyright and its contents confidential. It cannot be reproduced and given to the third parties without the written consent of Vakrangee Ltd.